

# Anti-CLK4 antibody



Catalog Number: 175918

## Product name

Anti-CLK4 antibody

## Ig Type

Rabbit IgG

## Specificity

Human, Mouse

## Applications

WB, IHC-P

## Antibody description

Rabbit polyclonal antibody to CLK4

## Dilutions

WB: 1:500-1:2000

## Preparation

This antigen of this antibody was the antiserum was produced against synthesized peptide derived from human clk4. aa range:101-150

IHC-P: 1:100-1:300

## Formulation

Liquid, Liquid in PBS containing 50% glycerol, 0.5% BSA and 0.02% sodium azide.

## Storage

Store at +4°C after thawing. Aliquot store at -20°C or -80°C. Avoid repeated freeze / thaw cycles.

## Clonality

Polyclonal

## Validations

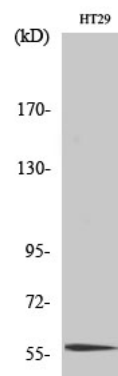


Fig1:: Western Blot analysis of various cells using CLK4 Polyclonal Antibody cells nucleus extracted by Minute TM Cytoplasmic and Nuclear Fractionation kit (SC-003, Invent biotech, MN, USA).