

# RQCD1 antibody

Catalog Number: 114918

## Product name

RQCD1 antibody

WB: 1:500-1:5000

IP: 1:500-1:5000

## Specificity

Human, Mouse, Rat; other species not tested.

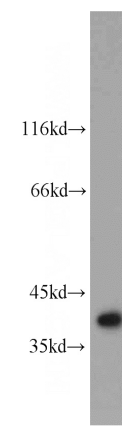
IHC: 1:20-1:200

IF: 1:20-1:200

## Antibody description

RQCD1 Rabbit Polyclonal antibody. Positive WB detected in mouse thymus tissue, HepG2 cells, MCF-7 cells. Positive IP detected in MCF-7 cells. Positive IF detected in HepG2 cells. Positive IHC detected in human small intestine tissue. Observed molecular weight by Western-blot: 34-40 kDa

## Validations



## Preparation

This antibody was obtained by immunization of RQCD1 recombinant protein (Accession Number: BC007102). Purification method: Antigen affinity purified.

mouse thymus tissue were subjected to SDS PAGE followed by western blot with Catalog No:114918(RQCD1 antibody) at dilution of 1:1000



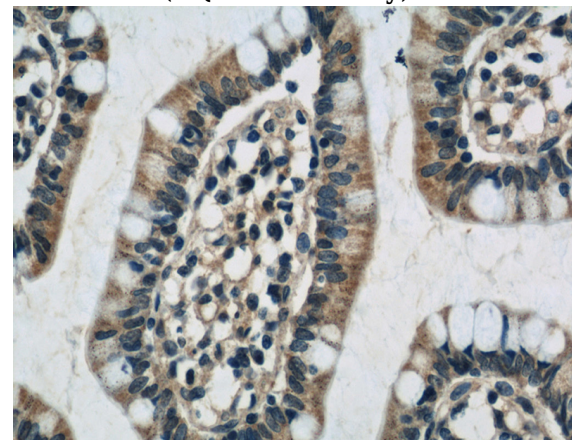
## Formulation

PBS with 0.02% sodium azide and 50% glycerol pH 7.3.

Immunohistochemistry of paraffin-embedded human small intestine slide using Catalog No:114918(RQCD1 Antibody) at dilution of 1:50

## Storage

Store at -20°C. DO NOT ALIQUOT



## Clonality

Polyclonal

## Ig Type

Rabbit IgG

## Applications

ELISA, WB, IF, IHC, IP

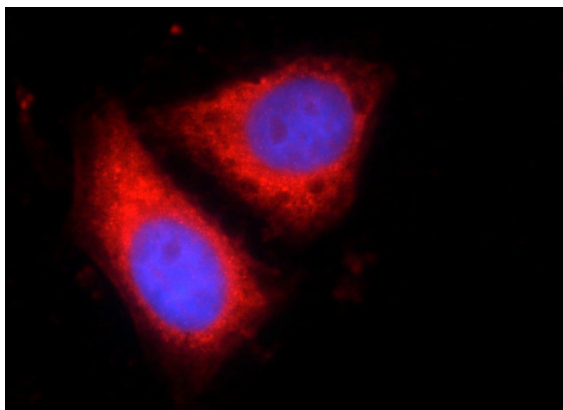
## Dilutions

Recommended Dilution:

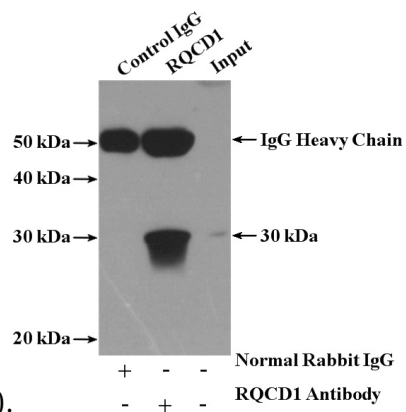
Immunohistochemistry of paraffin-embedded human small intestine slide using Catalog No:114918(RQCD1 Antibody) at dilution of 1:50

# RQCD1 antibody

Catalog Number: 114918



Immunofluorescent analysis of HepG2 cells using Catalog No:114918 (RQCD1 Antibody) at dilution of 1:50 and Rhodamine-labeled goat anti-rabbit



IgG (red).

IP Result of anti-RQCD1 (IP:Catalog No:114918, 4ug; Detection:Catalog No:114918 1:1000) with MCF-7 cells lysate 1280ug.