

Anti-GLO1/Glyoxalase 1 antibody



Catalog Number: 102918

Product name

Anti-GLO1/Glyoxalase 1 antibody

Immunogen

[Mouse GLO1/Glyoxalase 1 \(His Tag\) recombinant protein](#)

Specificity

Mouse Glyoxalase I / GLO1

Antibody description

Rabbit polyclonal to GLO1/Glyoxalase 1

Preparation

Produced in rabbits immunized with purified, recombinant Mouse GLO1 (rM GLO1; NP_079650.3; Ala 2-Ile 184). GLO1 specific IgG was purified by mouse GLO1 affinity chromatography

Formulation

0.2 µm filtered solution in PBS with 5% trehalose

Storage

This antibody can be stored at 2°C-8°C for one month without detectable loss of activity. Antibody products are stable for twelve months from date of receipt when stored at -20°C to -80°C.

Preservative-Free.

Sodium azide is recommended to avoid contamination (final concentration 0.05%-0.1%). It is toxic to cells and should be disposed of properly. Avoid repeated freeze-thaw cycles.

Clonality

Polyclonal

Ig Type

Rabbit IgG

Applications

ELISA, WB, IP

Dilutions

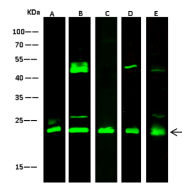
WB: 1-10 µg/mL

ELISA: 0.1-0.2 µg/mL

This antibody can be used at 0.1-0.2 µg/mL with the appropriate secondary reagents to detect Mouse GLO1. The detection limit for Mouse GLO1 is approximately 0.00245 ng/well.

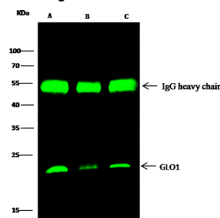
IP: 1-4 µg/mg of lysate

Validations



Items	Lanes	A	B	C	D	E
Sample (whole cell lysate)		293T	MCF7	A549	HepG2	Hela
Sample Volume (µg/lane)		30	30	30	30	30
Gel	13% SDS-PAGE reducing gel					
Recommended Concentration	1-10 µg/ml					
Secondary Antibody	Dylight 800-labeled Antibody To Rabbit IgG (H+L), at 1:5000 dilution.					
Explanation	Developed using Odyssey imaging system. Predicted band size : 21 kDa Observed band size : 23 kDa Additional bands at : 42 kDa and 26 kDa (We are unsure as to the identity of these extra bands. They are possible non-specific bindings).					

GLO1 / Glyoxalase 1 Antibody, Rabbit PAb, Antigen Affinity Purified, Western blot



Items	Lanes	A	B	C
Sample (whole cell lysate)		293T	A549	HepG2
Sample quantity		0.5 mg		
IP antibody quantity		2 µg		
Protein G agarose	15 µl of 50% Protein G Agarose			
Gel	13% SDS-PAGE reducing gel			
Primary antibody	mGLO1 antibody at 5 µg/ml [Cat# 50364-IP02]			
Secondary antibody	Dylight 800-labeled antibody to rabbit IgG (H+L), at 1:5000 dilution.			

GLO1 / Glyoxalase 1 Antibody, Rabbit PAb, Antigen Affinity Purified