

Anti-Phospho-Tau (Thr231) Rabbit antibody



Catalog Number: 167518

Product name

Anti-Phospho-Tau (Thr231) Rabbit antibody

Specificity

Human, Mouse, Rat

Antibody description

Phospho-Tau (Thr231) Rabbit polyclonal antibody

Preparation

Antigen: A synthesized peptide derived from human Phospho-Tau (T231)

Formulation

Rabbit IgG in phosphate buffered saline , pH 7.4, 150mM NaCl, 0.02% sodium azide and 50% glycerol.

Storage

Store at 4°C short term. Store at -20°C long term. Avoid freeze / thaw cycle.

Clonality

Polyclonal

Ig Type

Rabbit IgG

Applications

WB, IHC-P, IP

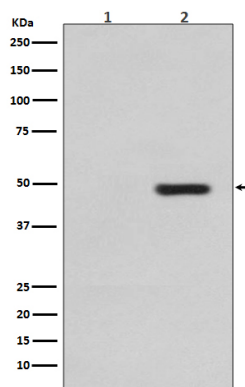
Dilutions

WB: 1/500-1/2000

IHC: 1/50-1/200

IP: 1/50

Validations



Western blot analysis of Phospho-Tau (T231) expression in (1) SH-SY5Y cell lysate; (2) SH-SY5Y cell lysate, treated with sorbitol.