

UBE2D1-Specific antibody

Catalog Number: 116518

Product name

UBE2D1-Specific antibody

IHC: 1:20-1:200

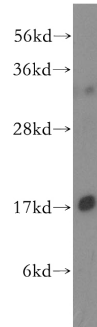
Specificity

Human, Mouse, Rat; other species not tested.

Antibody description

UBE2D1-Specific Rabbit Polyclonal antibody. Positive WB detected in mouse thymus tissue, HeLa cells, NIH/3T3. Positive IHC detected in human prostate cancer tissue. Observed molecular weight by Western-blot: 17 kDa

Validations



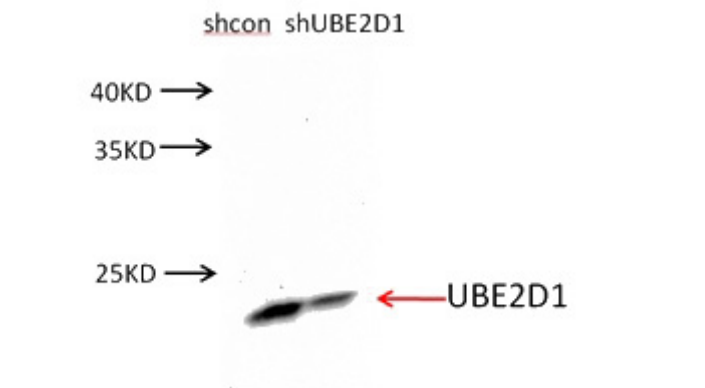
Preparation

This antibody was obtained by immunization of UBE2D1-Specific recombinant protein (Accession Number: NM_003338). Purification method: Antigen affinity purified.

mouse thymus tissue were subjected to SDS PAGE followed by western blot with Catalog No:116518(UBE2D1 antibody) at dilution of 1:300

Formulation

PBS with 0.1% sodium azide and 50% glycerol pH 7.3.



Storage

Store at -20°C. DO NOT ALIQUOT

Clonality

Polyclonal

Ig Type

Rabbit IgG

Applications

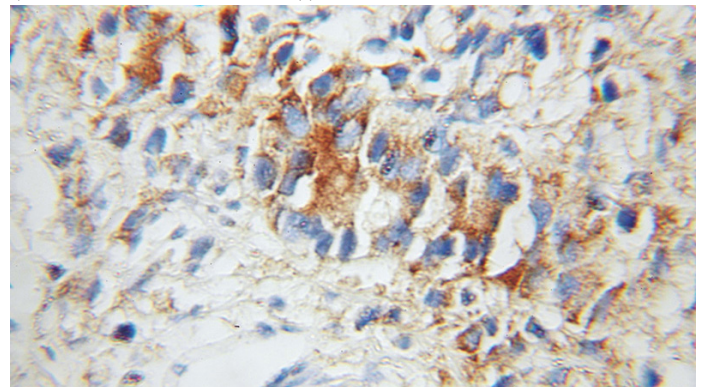
ELISA, WB, IHC

Dilutions

Recommended Dilution:

WB: 1:200-1:2000

NIH/3T3 cells were subjected to SDS PAGE followed by western blot with Catalog No:116518(UBE2D1 antibody) at dilution of 1:500. (Data provided by Angran Biotech (www.miRNAlab.com)).



Immunohistochemical of paraffin-embedded human prostate cancer using Catalog

UBE2D1-Specific antibody



Catalog Number: 116518

No:116518(UBE2D1 antibody) at dilution of 1:50 (under 10x lens)