

PLA2G4C Polyclonal Antibody



Catalog Number: 165518

Product name

PLA2G4C Polyclonal Antibody

Specificity

Human

Antibody description

Polyclonal antibody to PLA2G4C

Preparation

Antigen: Recombinant fusion protein containing a sequence corresponding to amino acids 1-189 of human PLA2G4C (NP_003697.2).

Formulation

PBS with 0.02% sodium azide, 50% glycerol, pH7.3.

Storage

Store at -20°C. Avoid freeze / thaw cycles.

Clonality

Polyclonal

Ig Type

Rabbit IgG

Applications

WB, IHC, IF

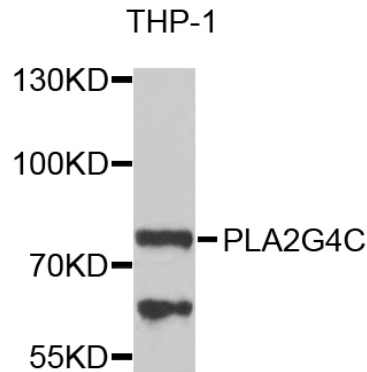
Dilutions

WB 1:500 - 1:2000

IHC 1:50 - 1:200

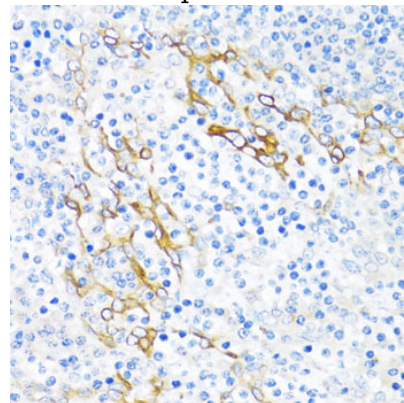
IF 1:50 - 1:200

Validations



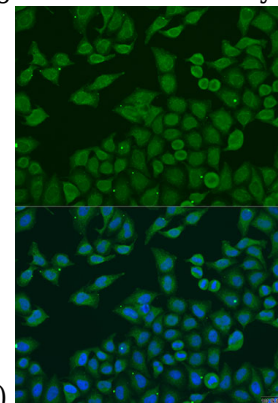
Western blot - PLA2G4C Polyclonal Antibody

Western blot analysis of extracts of THP-1 cells, using PLA2G4C antibody at 1:1000 dilution. Secondary antibody: HRP Goat Anti-Rabbit IgG (H+L) at 1:10000 dilution. Lysates/proteins: 25ug per lane. Blocking buffer: 3% nonfat dry milk in TBST. Detection: ECL Basic Kit. Exposure time: 90s.



Immunohistochemistry - PLA2G4C Polyclonal Antibody

Immunohistochemistry of paraffin-embedded human tonsil using PLA2G4C antibody at dilution



of 1:100 (40x lens).

PLA2G4C Polyclonal Antibody



Catalog Number: 165518

Immunofluorescence - PLA2G4C Polyclonal Antibody

Immunofluorescence analysis of U2OS cells using PLA2G4C antibody at dilution of 1:100. Blue: DAPI for nuclear staining.