

KRAP, SSFA2 antibody



Catalog Number: 112118

Product name

KRAP, SSFA2 antibody

IP: 1:200-1:2000

IHC: 1:20-1:200

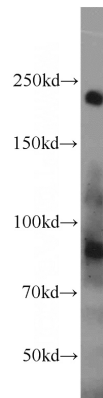
Specificity

Human, Rat; other species not tested.

Validations

Antibody description

KRAP, SSFA2 Rabbit Polyclonal antibody. Positive IHC detected in human pancreas tissue. Positive IP detected in mouse testis tissue. Positive WB detected in rat testis tissue. Observed molecular weight by Western-blot: 180 kDa



Preparation

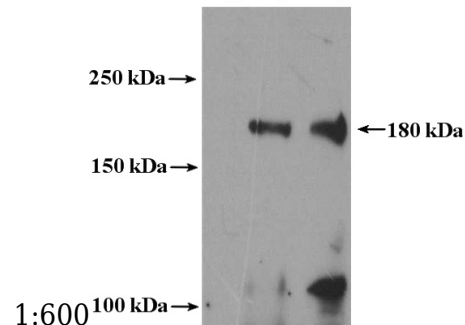
This antibody was obtained by immunization of KRAP, SSFA2 recombinant protein (Accession Number: NM_006751). Purification method: Antigen affinity purified.

rat testis tissue were subjected to SDS PAGE followed by western blot with Catalog No:112118(KRAP, SSFA2 antibody) at dilution of

Formulation

PBS with 0.02% sodium azide and 50% glycerol pH 7.3.

Control IgG
SSFA2
Input



Storage

Store at -20°C. DO NOT ALIQUOT

Clonality

Polyclonal

IP Result of anti-KRAP, SSFA2 (IP:Catalog No:112118, 4ug; Detection:Catalog No:112118 1:500) with mouse testis tissue lysate 4000ug.

Ig Type

Rabbit IgG

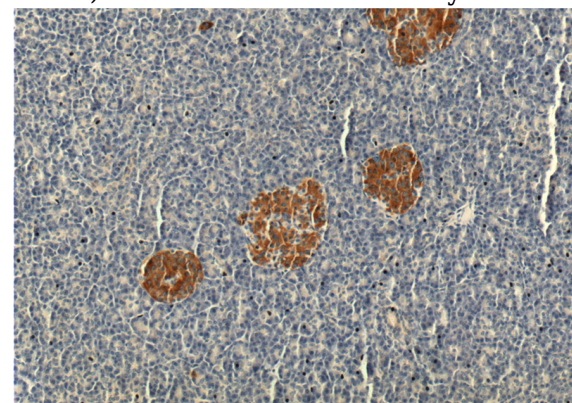
Applications

ELISA, WB, IP, IHC

Dilutions

Recommended Dilution:

WB: 1:200-1:2000

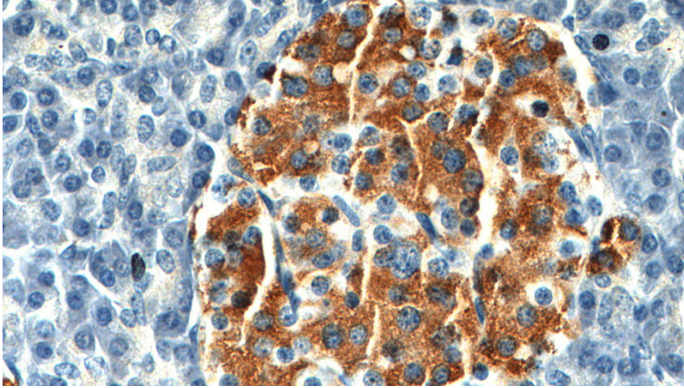


Immunohistochemistry of paraffin-embedded

KRAP, SSFA2 antibody

Catalog Number: 112118

human pancreas tissue slide using Catalog No:112118(KRAP, SSFA2 Antibody) at dilution of 1:200 (under 10x lens).



Immunohistochemistry of paraffin-embedded human pancreas tissue slide using Catalog No:112118(KRAP, SSFA2 Antibody) at dilution of 1:200 (under 40x lens).