

Anti-PI3 Kinase p85 alpha Rabbit antibody



Catalog Number: 168818

Product name

Rabbit IgG

Anti-PI3 Kinase p85 alpha Rabbit antibody

Applications

Specificity

WB, ICC/IF, FC, IP

Human, Mouse, Rat

Dilutions

Antibody description

1:1000

PI3 Kinase p85 alpha Rabbit monoclonal antibody

1:50

Preparation

1:20

Antigen: A synthetic peptide of human PI 3 Kinase p85 alpha

1:20

Validations

Formulation

Supplied in 50nM Tris-Glycine(pH 7.4), 0.15M NaCl, 40%Glycerol, 0.01% sodium azide and 0.05% BSA.

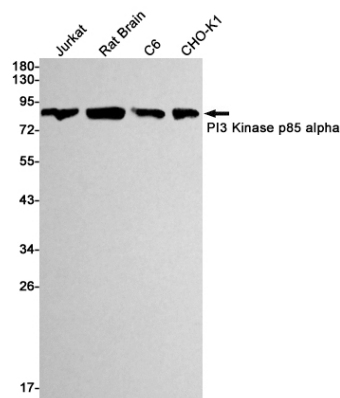
Storage

Store at 4°C short term. Aliquot and store at -20°C long term. Avoid freeze / thaw cycle.

Clonality

Monoclonal

Ig Type



Western blot detection of PI3 Kinase p85 alpha in Jurkat,C6,CHO-K1 cell lysates using PI3 Kinase p85 alpha Rabbit mAb(1:1000 diluted).Predicted band size:84kDa.Observed band size:84kDa.