

MDC1 Polyclonal Antibody



Catalog Number: 165818

Product name

MDC1 Polyclonal Antibody

Specificity

Human

Antibody description

Polyclonal antibody to MDC1

Preparation

Antigen: Recombinant fusion protein containing a sequence corresponding to amino acids 1-350 of human MDC1 (NP_055456.2).

Formulation

PBS with 0.02% sodium azide, 50% glycerol, pH7.3.

Storage

Store at -20°C. Avoid freeze / thaw cycles.

Clonality

Polyclonal

Ig Type

Rabbit IgG

Applications

WB, IHC, IF

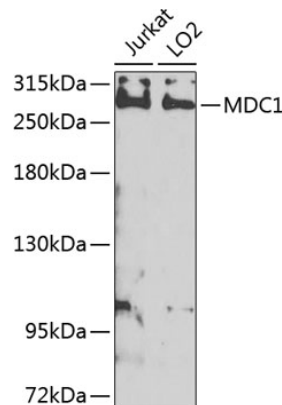
Dilutions

WB 1:500 - 1:2000

IHC 1:100 - 1:200

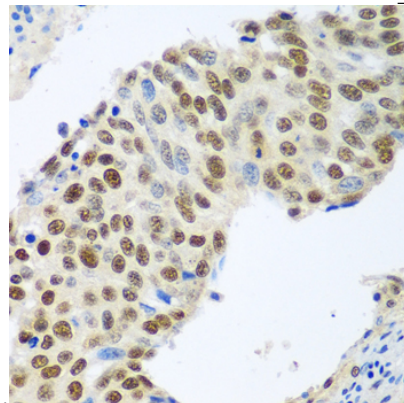
IF 1:50 - 1:200

Validations



Western blot - MDC1 Polyclonal Antibody

Western blot analysis of extracts of various cell lines, using MDC1 antibody at 1:1000 dilution. Secondary antibody: HRP Goat Anti-Rabbit IgG (H+L) at 1:10000 dilution. Lysates/proteins: 25ug per lane. Blocking buffer: 3% nonfat dry milk in TBST. Detection: ECL Enhanced Kit. Exposure



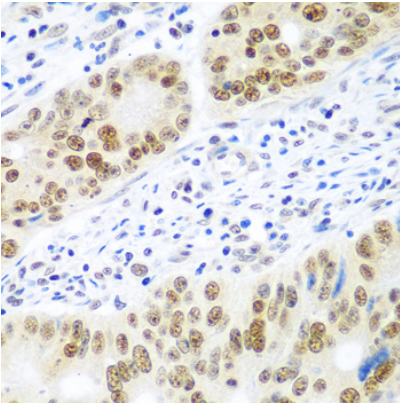
time: 5s.

Immunohistochemistry - MDC1 Polyclonal Antibody

Immunohistochemistry of paraffin-embedded human lung cancer using MDC1 antibody at dilution of 1:100 (40x lens).

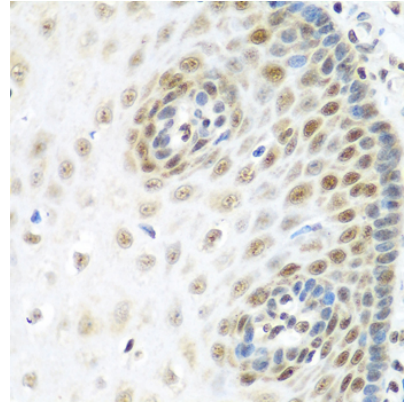
MDC1 Polyclonal Antibody

Catalog Number: 165818



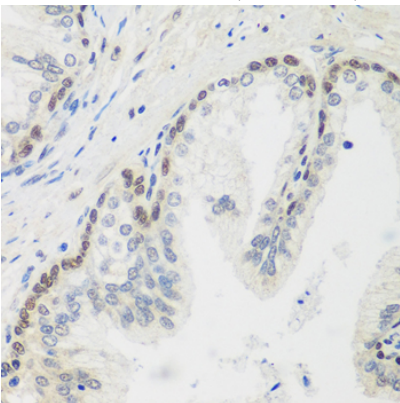
Immunohistochemistry - MDC1 Polyclonal Antibody

Immunohistochemistry of paraffin-embedded human prostate cancer using MDC1 antibody at dilution of 1:100 (40x lens).



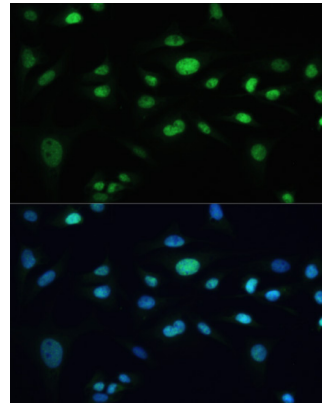
Immunohistochemistry - MDC1 Polyclonal Antibody

Immunohistochemistry of paraffin-embedded human colon carcinoma using MDC1 antibody at dilution of 1:100 (40x lens).



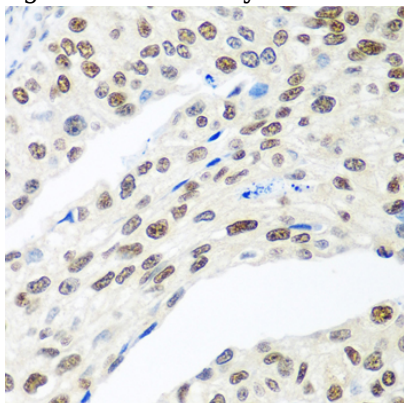
Immunohistochemistry - MDC1 Polyclonal Antibody

Immunohistochemistry of paraffin-embedded human esophagus using MDC1 antibody at dilution of 1:100 (40x lens).



Immunohistochemistry - MDC1 Polyclonal Antibody

Immunohistochemistry of paraffin-embedded human prostate using MDC1 antibody at dilution



of 1:100 (40x lens).

Immunofluorescence - MDC1 Polyclonal Antibody

Immunofluorescence analysis of U-2 OS cells using MDC1 antibody at dilution of 1:100. Blue: DAPI for nuclear staining.