

RPL18 antibody



Catalog Number: 114818

Product name

RPL18 antibody

Specificity

Human, Mouse, Rat; other species not tested.

Antibody description

RPL18 Rabbit Polyclonal antibody. Positive WB detected in HeLa cells, HEK-293 cells, HepG2 cells. Observed molecular weight by Western-blot: 22-26 kDa

Preparation

This antibody was obtained by immunization of RPL18 recombinant protein (Accession Number: NM_000979). Purification method: Antigen affinity purified.

Formulation

PBS with 0.1% sodium azide and 50% glycerol pH 7.3.

Storage

Store at -20°C. DO NOT ALIQUOT

Clonality

Polyclonal

Ig Type

Rabbit IgG

Applications

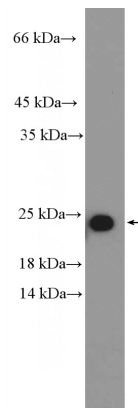
ELISA, WB

Dilutions

Recommended Dilution:

WB: 1:200-1:2000

Validations



HeLa cells were subjected to SDS PAGE followed by western blot with Catalog No:114818(RPL18 Antibody) at dilution of 1:600