

Anti-GAPDH antibody



Catalog Number: 104818

Product name

Anti-GAPDH antibody

Specificity

Human GAPDH

Antibody description

Rabbit polyclonal to GAPDH

Preparation

Produced in rabbits immunized with A synthetic peptide corresponding to the center region of the human GAPDH, and purified by antigen affinity chromatography.

Formulation

0.2 µm filtered solution in PBS

Storage

This antibody can be stored at 2°C-8°C for one month without detectable loss of activity. Antibody products are stable for twelve months from date of receipt when stored at -20°C to -80°C.

Preservative-Free.

Sodium azide is recommended to avoid contamination (final concentration 0.05%-0.1%). It is toxic to cells and should be disposed of properly. Avoid repeated freeze-thaw cycles.

Clonality

Polyclonal

Ig Type

Rabbit IgG

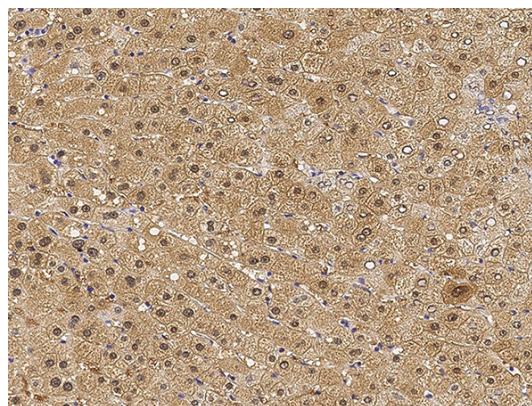
Applications

IHC-P

Dilutions

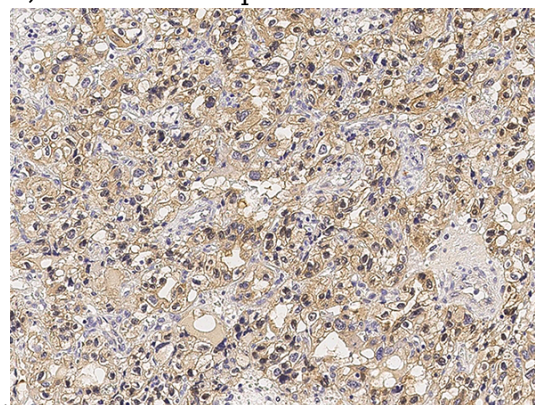
IHC-P: 0.1-2 µg/mL

Validations



GAPDH Antibody, Rabbit PAb, Antigen Affinity Purified, Immunohistochemistry

Immunochemical staining of human GAPDH in human hepatitis with rabbit polyclonal antibody (0.5 µg/mL, formalin-fixed paraffin embedded



sections).

GAPDH Antibody, Rabbit PAb, Antigen Affinity Purified, Immunohistochemistry

Immunochemical staining of human GAPDH in human renal carcinoma with rabbit polyclonal antibody (0.5 µg/mL, formalin-fixed paraffin embedded sections).