

MRPL23 antibody



Catalog Number: 112818

Product name

MRPL23 antibody

Specificity

Human; other species not tested.

Antibody description

MRPL23 Rabbit Polyclonal antibody. Positive WB detected in A2780 cells, HEK-293 cells, HeLa cells, MCF7 cells, PC-3 cells. Positive IF detected in PC-3 cells, MCF-7 cells. Observed molecular weight by Western-blot: 18kd

Preparation

This antibody was obtained by immunization of MRPL23 recombinant protein (Accession Number: NM_021134). Purification method: Antigen affinity purified.

Formulation

PBS with 0.02% sodium azide and 50% glycerol pH 7.3.

Storage

Store at -20°C. DO NOT ALIQUOT

Clonality

Polyclonal

Ig Type

Rabbit IgG

Applications

ELISA, WB, IF

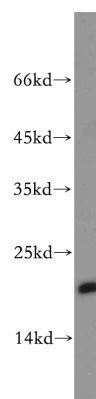
Dilutions

Recommended Dilution:

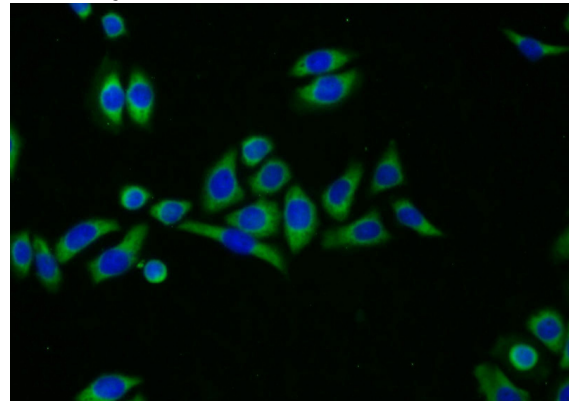
WB: 1:200-1:2000

IF: 1:10-1:100

Validations



A2780 cells were subjected to SDS PAGE followed by western blot with Catalog No:112818(MRPL23 antibody) at dilution of 1:100



Immunofluorescent analysis of PC-3 cells using Catalog No:112818(MRPL23 Antibody) at dilution of 1:25 and Alexa Fluor 488-conjugated AffiniPure Goat Anti-Rabbit IgG(H+L)