

IPO11 antibody



Catalog Number: 111818

Product name

IP: 1:200-1:2000

IPO11 antibody

IHC: 1:20-1:200

Specificity

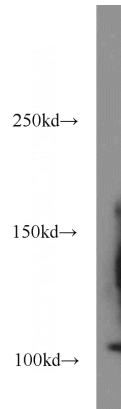
IF: 1:50-1:500

Human, Mouse, Rat; other species not tested.

Validations

Antibody description

IPO11 Rabbit Polyclonal antibody. Positive IHC detected in human lung cancer tissue. Positive IF detected in HeLa cells. Positive WB detected in human testis tissue. Positive IP detected in mouse testis tissue. Observed molecular weight by Western-blot: 112 kDa



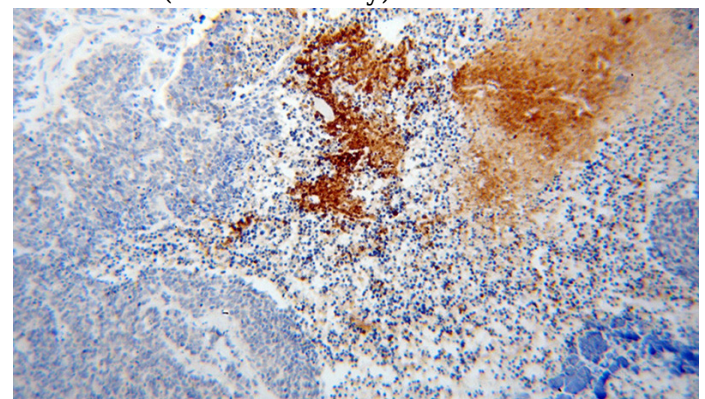
Preparation

This antibody was obtained by immunization of IPO11 recombinant protein (Accession Number: NM_016338). Purification method: Antigen affinity purified.

human testis tissue were subjected to SDS PAGE followed by western blot with Catalog No:111818(IPO11 antibody) at dilution of 1:1000

Formulation

PBS with 0.02% sodium azide and 50% glycerol pH 7.3.



Storage

Store at -20°C. DO NOT ALIQUOT

Clonality

Polyclonal

Ig Type

Rabbit IgG

Applications

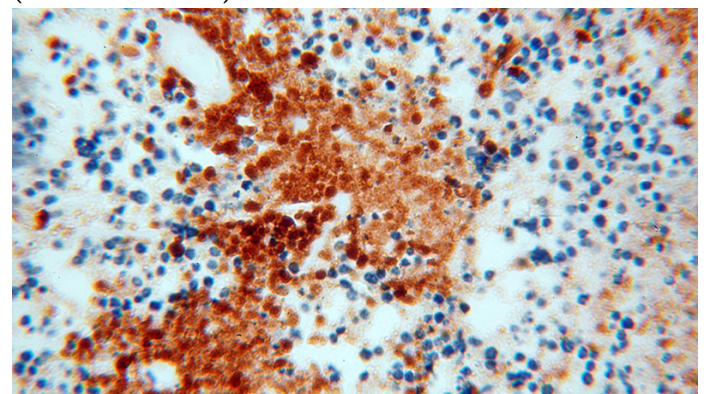
ELISA, WB, IHC, IP, IF

Dilutions

Recommended Dilution:

WB: 1:500-1:5000

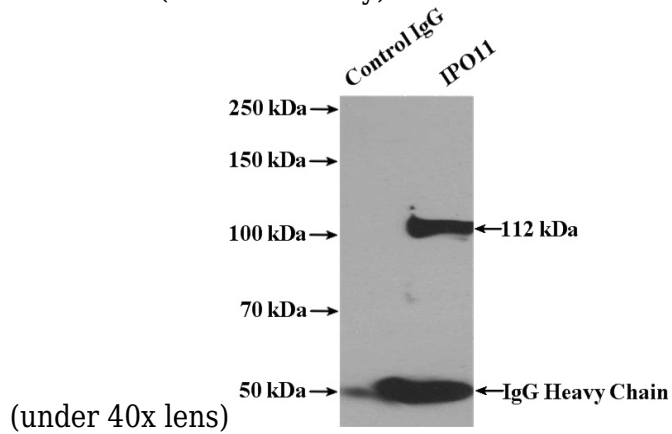
Immunohistochemical of paraffin-embedded human lung cancer using Catalog No:111818(IPO11 antibody) at dilution of 1:100 (under 10x lens)



IPO11 antibody

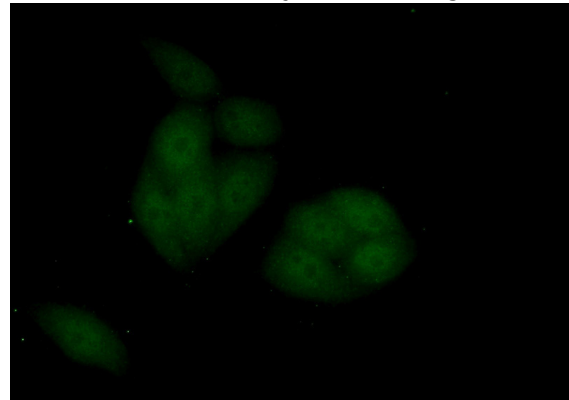
Catalog Number: 111818

Immunohistochemical of paraffin-embedded human lung cancer using Catalog No:111818(IPO11 antibody) at dilution of 1:100



IP Result of anti-IPO11 (IP:Catalog No:111818, 4ug; Detection:Catalog No:111818 1:500) with

mouse testis tissue lysate 4000ug.



Immunofluorescent analysis of (10% Formaldehyde) fixed HeLa cells using Catalog No:111818(IPO11 Antibody) at dilution of 1:50 and Alexa Fluor 488-conjugated AffiniPure Goat Anti-Rabbit IgG(H+L)