

# MCL1 antibody



Catalog Number: 107418

## Product name

MCL1 antibody

IHC: 1:20-1:200

IF: 1:10-1:100

## Specificity

Human; other species not tested.

## Antibody description

MCL1 Mouse Monoclonal antibody. Positive IHC detected in human breast cancer tissue. Positive IF detected in MCF-7 cells, Hela cells. Positive WB detected in Hela cells, A431 cells, Jurkat cells. Observed molecular weight by Western-blot: 40 kDa

## Preparation

This antibody was obtained by immunization of MCL1 recombinant protein (Accession Number: NM\_021960). Purification method: Protein A purified.

## Formulation

PBS with 0.02% sodium azide and 50% glycerol pH 7.3.

## Storage

Store at -20°C. DO NOT ALIQUOT

## Clonality

Monoclonal

## Ig Type

Mouse IgG2b

## Applications

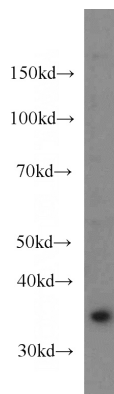
ELISA, WB, IF, IHC

## Dilutions

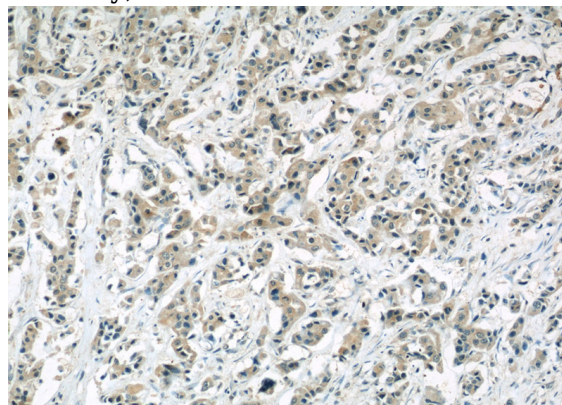
Recommended Dilution:

WB: 1:500-1:5000

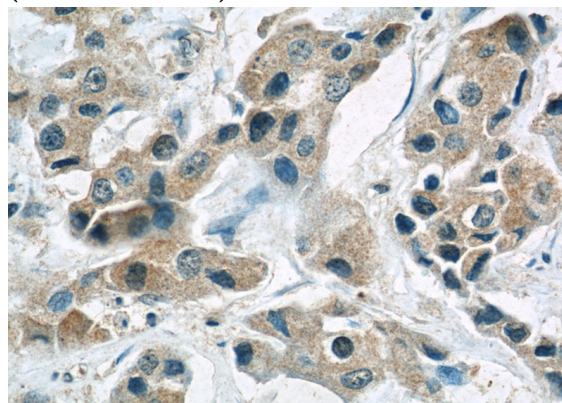
## Validations



HeLa cells were subjected to SDS PAGE followed by western blot with Catalog No:107418(MCL1 antibody) at dilution of 1:1000



Immunohistochemical of paraffin-embedded human breast cancer using Catalog No:107418(MCL1 antibody) at dilution of 1:50 (under 10x lens)



Immunohistochemical of paraffin-embedded

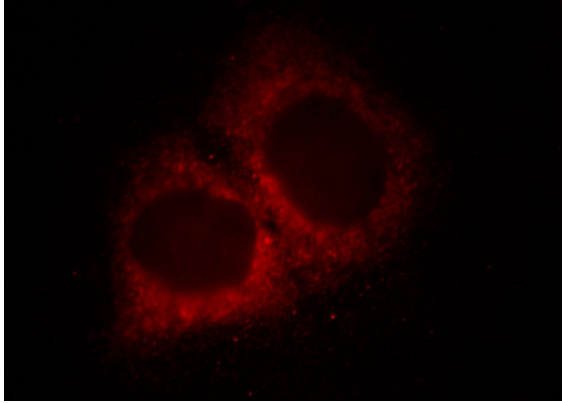
# MCL1 antibody



Catalog Number: 107418

---

human breast cancer using Catalog  
No:107418(MCL1 antibody) at dilution of 1:50  
(under 40x lens)



Immunofluorescent analysis of MCF-7 cells, using  
MCL1 antibody Catalog No: at 1:25 dilution and  
Rhodamine-labeled goat anti-mouse IgG (red).