

Anti-FAM210B antibody



Catalog Number: 175418

Product name

Anti-FAM210B antibody

Specificity

Human, Mouse, Rat, Chicken, Dog, Pig, Cow, Horse, Rabbit, Sheep

Antibody description

Rabbit polyclonal antibody to FAM210B

Preparation

This antigen of this antibody was klh conjugated synthetic peptide derived from human fam210b 101-192/192

Formulation

Liquid, 0.01M TBS(pH7.4) with 1% BSA, 0.03% Proclin300 and 50% Glycerol.

Storage

Store at -20°C for one year. Avoid repeated freeze/thaw cycles. The lyophilized antibody is stable at room temperature for at least one month and for greater than a year when kept at -20°C. When reconstituted in sterile pH 7.4 0.01M PBS or diluent of antibody the antibody is stable for at least two weeks at 2-4°C.

Clonality

Polyclonal

Ig Type

Rabbit IgG

Applications

WB

Dilutions

WB:1:500-2000

Validations

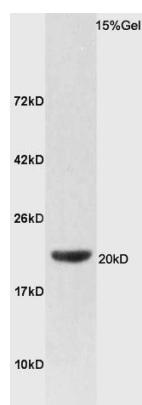


Fig1: Protein: lung(rat) lysates at 30ug;; Primary: Anti-FAM210B at 1:200;; Secondary: HRP conjugated Goat Anti-Rabbit IgG(bs-0295G-HRP) at 1: 3000;; ECL excited the fluorescence;; Predicted band size : 20kD; Observed band size : 20kD