

EXTL2 antibody

Catalog Number: 110418

Product name

EXTL2 antibody

Specificity

Human, Mouse, Rat; other species not tested.

Antibody description

EXTL2 Rabbit Polyclonal antibody. Positive IF detected in HeLa cells. Positive WB detected in HeLa cells. Observed molecular weight by Western-blot: 37 kDa

Preparation

This antibody was obtained by immunization of EXTL2 recombinant protein (Accession Number: XM_005270621). Purification method: Antigen affinity purified.

Formulation

PBS with 0.1% sodium azide and 50% glycerol pH 7.3.

Storage

Store at -20°C. DO NOT ALIQUOT

Clonality

Polyclonal

Ig Type

Rabbit IgG

Applications

ELISA, WB, IF

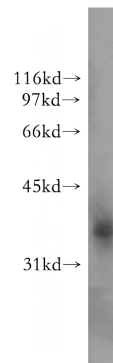
Dilutions

Recommended Dilution:

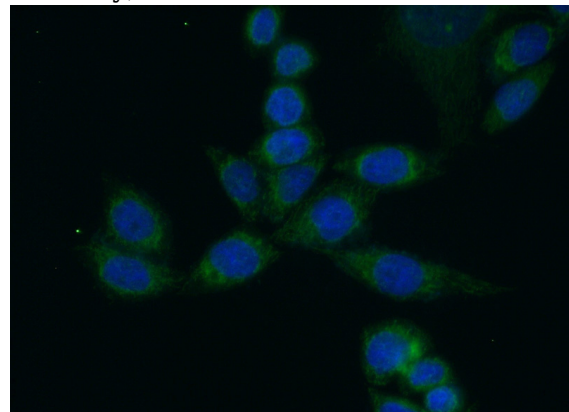
WB: 1:500-1:5000

IF: 1:20-1:200

Validations



HeLa cells were subjected to SDS PAGE followed by western blot with Catalog No:110418(EXTL2 antibody) at dilution of 1:400



Immunofluorescent analysis of (10% Formaldehyde) fixed HeLa cells using Catalog No:110418(EXTL2 Antibody) at dilution of 1:50 and Alexa Fluor 488-conjugated AffiniPure Goat Anti-Rabbit IgG(H+L)