

Anti-Neuroserpin/Serpini1 antibody



Catalog Number: 100418

Product name

Anti-Neuroserpin/Serpini1 antibody

Immunogen

[Mouse Neuroserpin/Serpini1 \(His Tag\) recombinant protein](#)

Specificity

Mouse Neuroserpin / Serpini1

Has cross-reactivity in ELISA with Human SERPINI1

No cross-reactivity in ELISA with Human SERPINA1; Human SERPINA3; Human SERPINA5; Human SERPINA12; Human SERPINB6; Human SERPINB9; Human SERPINC1; Human SERPIND1; Human SERPINF2; Human SERPING1; Human SERPINI2

Antibody description

Rabbit monoclonal to Neuroserpin/Serpini1

Preparation

This antibody was obtained from a rabbit immunized with purified, recombinant Mouse Neuroserpin / Serpini1 (rM Neuroserpin / Serpini1; O35684; Met1-Leu410).

Formulation

0.2 µm filtered solution in PBS

Storage

This antibody can be stored at 2°C-8°C for one month without detectable loss of activity. Antibody

products are stable for twelve months from date of receipt when stored at -20°C to -80°C.

Preservative-Free.

Sodium azide is recommended to avoid contamination (final concentration 0.05%-0.1%). It is toxic to cells and should be disposed of properly. Avoid repeated freeze-thaw cycles.

Clonality

Monoclonal

Ig Type

Rabbit IgG

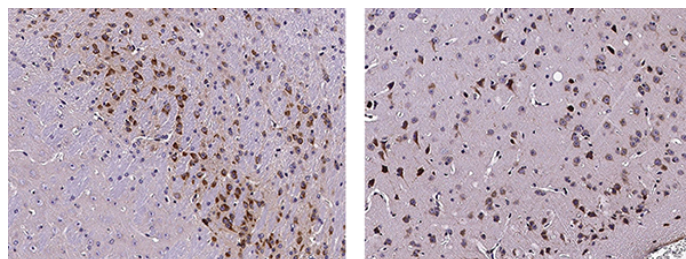
Applications

IHC-P

Dilutions

IHC-P: 0.5-5 µg/mL

Validations



Neuroserpin / Serpini1 Antibody, Rabbit MAb, Immunohistochemistry

Immunochemical staining of mouse serpinI1 in mouse brain (from 2 donors) with rabbit monoclonal antibody (1 µg/mL, formalin-fixed paraffin embedded sections).