

# Anti-CD3 epsilon Rabbit antibody



Catalog Number: 169018

## Product name

Anti-CD3 epsilon Rabbit antibody

## Specificity

Human

## Antibody description

CD3 epsilon Rabbit monoclonal antibody

## Preparation

Antigen: A synthetic peptide of human CD3 epsilon

## Formulation

50nM Tris-Glycine(pH 7.4), 0.15M NaCl, 40%Glycerol, 0.01% sodium azide and 0.05% BSA.

## Storage

Store at 4°C short term. Store at -20°C long term. Avoid freeze / thaw cycle.

## Clonality

Monoclonal

## Ig Type

Rabbit IgG

## Applications

WB, FC, IP

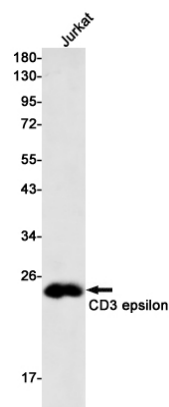
## Dilutions

WB: 1/2000-1/10000

FC: 1/20-1/100

IP: 1/20

## Validations



Western blot detection of CD3 epsilon in Jurkat cell lysates using CD3 epsilon Rabbit mAb(1:500 diluted). Predicted band size:23kDa.Observed band size:23kDa.