

SUMO4 Polyclonal Antibody



Catalog Number: 164018

Product name

SUMO4 Polyclonal Antibody

Specificity

Human, Mouse

Antibody description

Polyclonal antibody to SUMO4

Preparation

Antigen: A synthetic peptide of human SUMO4

Formulation

PBS with 0.02% sodium azide, 50% glycerol, pH7.3.

Storage

Store at -20°C. Avoid freeze / thaw cycles.

Clonality

Polyclonal

Ig Type

Rabbit IgG

Applications

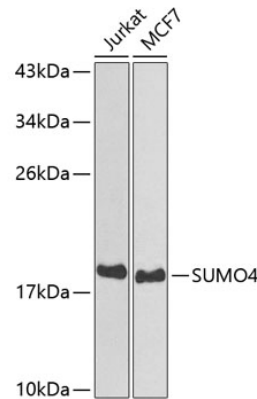
WB, IHC

Dilutions

WB 1:1000 - 1:2000

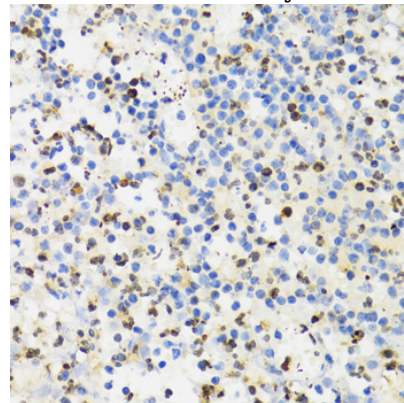
IHC 1:100 - 1:300

Validations



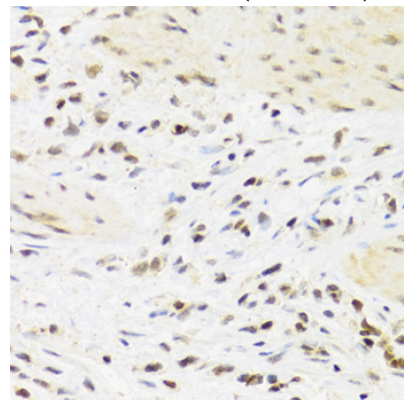
Western blot - SUMO4 Polyclonal Antibody

Western blot analysis of extracts of various cell lines, using SUMO4 antibody at 1:800 dilution. Secondary antibody: HRP Goat Anti-Rabbit IgG (H+L) at 1:10000 dilution. Lysates/proteins: 25ug per lane. Blocking buffer: 3% nonfat dry milk in TBST.



Immunohistochemistry - SUMO4 Polyclonal Antibody

Immunohistochemistry of paraffin-embedded human kidney cancer using SUMO4 Antibody at dilution of 1:200 (40x lens).



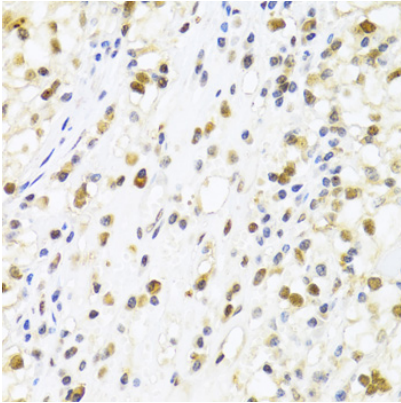
SUMO4 Polyclonal Antibody



Catalog Number: 164018

Immunohistochemistry - SUMO4 Polyclonal Antibody

Immunohistochemistry of paraffin-embedded human appendicitis using SUMO4 Antibody at dilution of 1:100 (40x lens).



Immunohistochemistry - SUMO4 Polyclonal Antibody

Immunohistochemistry of paraffin-embedded human breast cancer using SUMO4 Antibody at dilution of 1:100 (40x lens).