

Anti-Cathepsin S/CTSS antibody



Catalog Number: 101018

Product name

Anti-Cathepsin S/CTSS antibody

Immunogen

[Mouse Cathepsin S/CTSS \(His Tag\) recombinant protein](#)

Specificity

Mouse Cathepsin S / CTSS

Antibody description

Rabbit polyclonal to Cathepsin S/CTSS

Preparation

Produced in rabbits immunized with purified, recombinant Mouse Cathepsin S / CTSS (rM Cathepsin S / CTSS; AAB94925.1; Met1-Ile340). Cathepsin S / CTSS specific IgG was purified by Mouse Cathepsin S / CTSS affinity chromatography.

Formulation

0.2 μ m filtered solution in PBS with 5% trehalose

Storage

This antibody can be stored at 2°C-8°C for one month without detectable loss of activity. Antibody products are stable for twelve months from date of receipt when stored at -20°C to -80°C.

Preservative-Free.

Sodium azide is recommended to avoid contamination (final concentration 0.05%-0.1%). It is toxic to cells and should be disposed of

properly. Avoid repeated freeze-thaw cycles.

Clonality

Polyclonal

Ig Type

Rabbit IgG

Applications

ELISA, WB

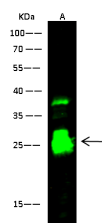
Dilutions

WB: 1-10 μ g/ml

ELISA: 0.1-0.2 μ g/mL

This antibody can be used at 0.1-0.2 μ g/mL with the appropriate secondary reagents to detect Mouse Cathepsin S / CTSS. The detection limit for Mouse Cathepsin S / CTSS is < 0.039 ng/well.

Validations



Lanes	A
Items	
Sample (whole cell lysate)	RAW264.7
Sample Volume (μ g/lane)	30
Gel	13% SDS-PAGE reducing gel
Recommended Concentration	1-10 μ g/ml
Secondary Antibody	Dylight 800-labeled Antibody To Rabbit IgG (H+L), at 1:5000 dilution.

Cathepsin S / CTSS Antibody, Rabbit PAb, Antigen Affinity Purified, Western blot