

Anti-HIPK2 Rabbit antibody



Catalog Number: 167708

Product name

Anti-HIPK2 Rabbit antibody

Specificity

Human, Mouse

Antibody description

HIPK2 Rabbit monoclonal antibody

Preparation

Antigen: A synthetic peptide of human HIPK2

Formulation

50nM Tris-Glycine(pH 7.4), 0.15M NaCl,
40%Glycerol, 0.01% sodium azide and 0.05% BSA

Storage

Store at 4°C short term. Store at -20°C long term.
Avoid freeze / thaw cycle.

Clonality

Monoclonal

Ig Type

Rabbit IgG

Applications

WB, ICC/IF, FC, IP

Dilutions

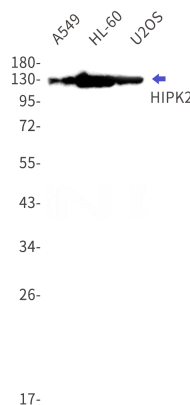
WB: 1/2000

ICC/IF: 1/50

FC: 1/200-1/1000

IP: 1/20

Validations



Western blot detection of HIPK2 in A549,HL-60,U2OS cell lysates using HIPK2 Rabbit mAb(1:1000 diluted).Predicted band size:131kDa.Observed band size:131kDa.