

Anti-YBX2 antibody

Catalog Number: 176708

Product name

Anti-YBX2 antibody

Specificity

Human, Mouse, Rat

Antibody description

Rabbit polyclonal antibody to YBX2

Preparation

This antigen of this antibody was synthetic peptide within human ybox1 aa 302-355.

Formulation

Liquid, 1*PBS (pH7.4), 0.2% BSA, 40% Glycerol.
Preservative: 0.05% Sodium Azide.

Storage

Store at +4°C after thawing. Aliquot store at -20°C or -80°C. Avoid repeated freeze / thaw cycles.

Clonality

Polyclonal

Ig Type

Rabbit IgG

Applications

WB, ICC, IHC-P, FC

Dilutions

WB: 1:1,000

ICC: 1:50-1:200

IHC-P: 1:50-1:200

FC: 1:50-1:100

Validations

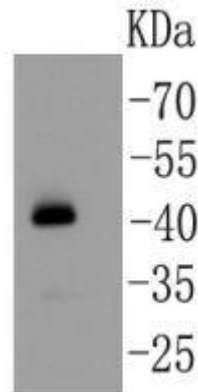


Fig1: Western blot analysis on mouse testis lysates using anti-YB1 rabbit polyclonal antibody.

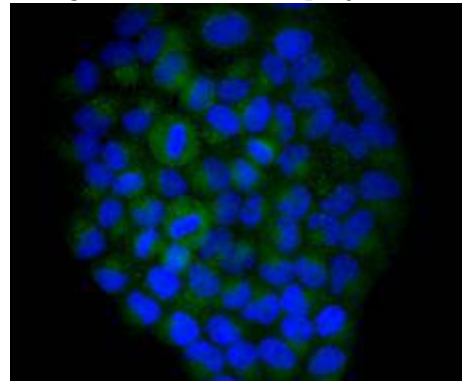


Fig2: Immunocytochemical staining of HeLa cells using anti-YB1 rabbit polyclonal antibody.

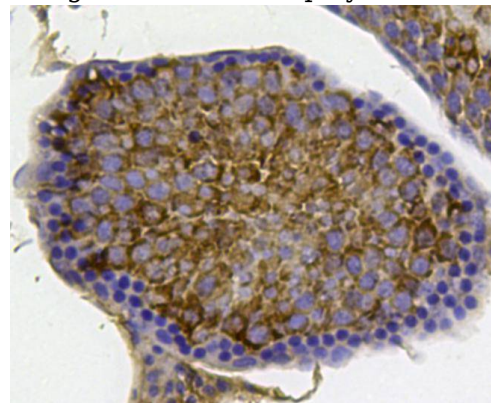


Fig3: Immunohistochemical analysis of paraffin-embedded mouse testis tissue using anti-YB1 rabbit polyclonal antibody.

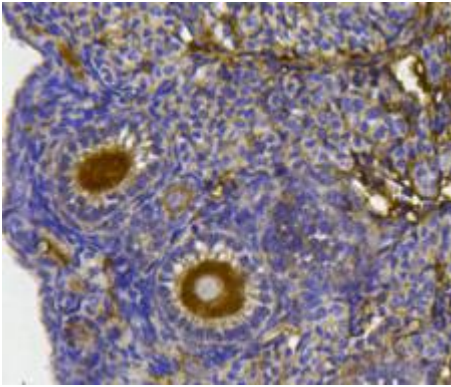


Fig4: Immunohistochemical analysis of paraffin-embedded mouse ovary tissue using anti-YB1 rabbit polyclonal antibody.

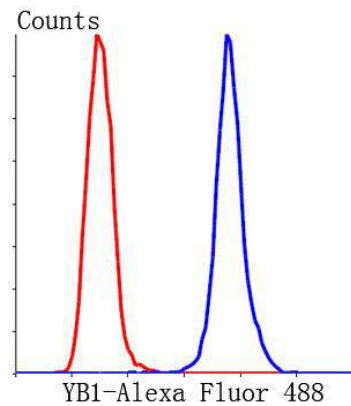


Fig5: Flow cytometric analysis of Hela cells with YB1 antibody at 1/50 dilution (blue) compared with an unlabelled control (cells without incubation with primary antibody; red). Alexa Fluor 488-conjugated Goat anti rabbit IgG was used as the secondary antibody.