

Anti-Sumo 1 Rabbit antibody



Catalog Number: 166708

Product name

Anti-Sumo 1 Rabbit antibody

WB: 1/500-1/2000

IHC: 1/50-1/200

Specificity

Human, Mouse, Rat

ICC/IF: 1/50-1/200

IP: 1/50

FC: 1/50

Antibody description

Sumo 1 Rabbit polyclonal antibody

Preparation

Antigen: A synthesized peptide derived from human Sumo 1

Formulation

Rabbit IgG in phosphate buffered saline , pH 7.4, 150mM NaCl, 0.02% sodium azide and 50% glycerol.

Storage

Store at 4°C short term. Store at -20°C long term. Avoid freeze / thaw cycle.

Clonality

Polyclonal

Ig Type

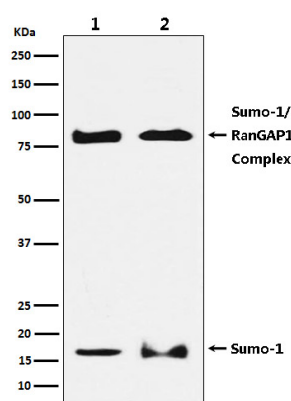
Rabbit IgG

Applications

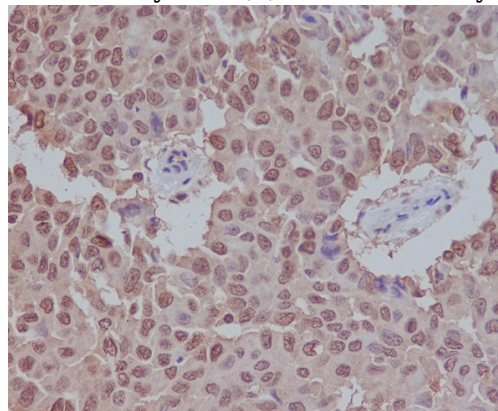
WB, IHC-P, ICC/IF, IP, FC

Dilutions

Validations



Western blot analysis of SUMO1 expression in (1) HeLa cell lysate; (2) NIH/3T3 cell lysate.



Immunohistochemical analysis of paraffin-embedded human breast carcinoma, using Sumo 1 Antibody .