

# STIM2 antibody

Catalog Number: 115708

## Product name

STIM2 antibody

## Immunogen

[Human STIM2 Recombinant protein \(GST tag\)](#)

## Specificity

Human, Mouse, Rat; other species not tested.

## Antibody description

STIM2 Rabbit Polyclonal antibody. Positive IHC detected in human spleen tissue, human brain tissue. Positive IP detected in HEK-293 cells. Positive WB detected in HeLa cells, HEK-293 cells, HepG2 cells, Jurkat cells. Observed molecular weight by Western-blot: 85-115 kDa

## Preparation

This antibody was obtained by immunization of STIM2 recombinant protein (Accession Number: BC146661). Purification method: Antigen affinity purified.

## Formulation

PBS with 0.02% sodium azide and 50% glycerol pH 7.3.

## Storage

Store at -20°C. DO NOT ALIQUOT

## Clonality

Polyclonal

## Ig Type

Rabbit IgG

## Applications

ELISA, IHC, IP, WB

## Dilutions

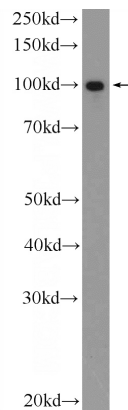
Recommended Dilution:

WB: 1:500-1:5000

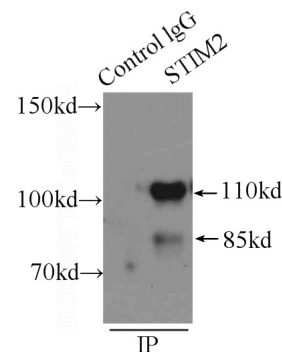
IP: 1:200-1:2000

IHC: 1:20-1:200

## Validations



HeLa cells were subjected to SDS PAGE followed by western blot with Catalog No:115708(STIM2 Antibody) at dilution of 1:1000

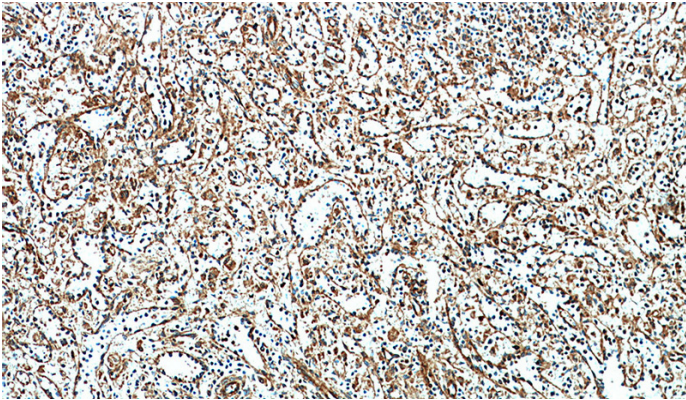


IP Result of anti-STIM2 (IP:Catalog No:115708, 3ug; Detection:Catalog No:115708 1:500) with HEK-293 cells lysate 2000ug.

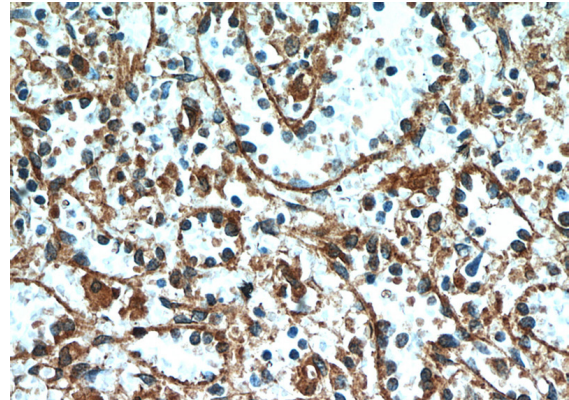
# STIM2 antibody

Catalog Number: 115708

---



Immunohistochemical of paraffin-embedded human spleen using Catalog No:115708(STIM2 antibody) at dilution of 1:100 (under 10x lens)



Immunohistochemical of paraffin-embedded human spleen using Catalog No:115708(STIM2 antibody) at dilution of 1:100 (under 40x lens)