

RIN1 antibody

Catalog Number: 114708

Product name

RIN1 antibody

IP: 1:200-1:2000

IF: 1:50-1:500

Specificity

Human, Mouse, Rat; other species not tested.

Antibody description

RIN1 Rabbit Polyclonal antibody. Positive IF detected in HeLa cells. Positive IP detected in HeLa cells. Positive WB detected in HeLa cells. Observed molecular weight by Western-blot: 90 kDa

Preparation

This antibody was obtained by immunization of RIN1 recombinant protein (Accession Number: NM_004292). Purification method: Antigen affinity purified.

Formulation

PBS with 0.02% sodium azide and 50% glycerol pH 7.3.

Storage

Store at -20°C. DO NOT ALIQUOT

Clonality

Polyclonal

Ig Type

Rabbit IgG

Applications

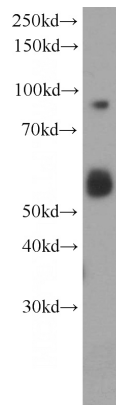
ELISA, WB, IF, IP

Dilutions

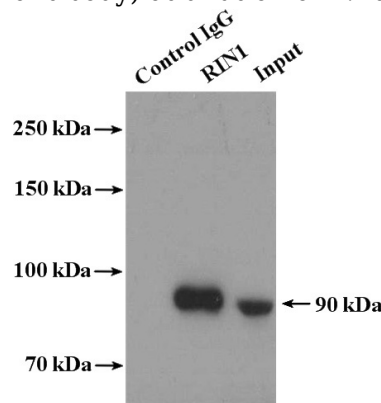
Recommended Dilution:

WB: 1:500-1:5000

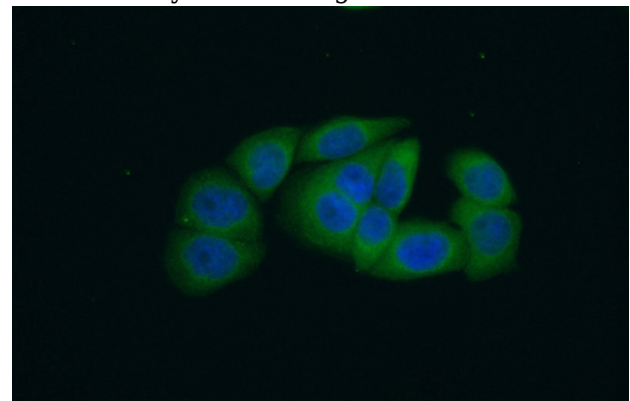
Validations



HeLa cells were subjected to SDS PAGE followed by western blot with Catalog No:114708(RIN1 antibody) at dilution of 1:1000



IP Result of anti-RIN1 (IP:Catalog No:114708, 4ug; Detection:Catalog No:114708 1:500) with HeLa cells lysate 3400ug.



Immunofluorescent analysis of (10% Formaldehyde) fixed HeLa cells using Catalog

RIN1 antibody



Catalog Number: 114708

No:114708(RIN1 Antibody) at dilution of 1:50 and

Alexa Fluor 488-conjugated AffiniPure Goat Anti-Rabbit IgG(H+L)