

# MMP8 antibody



Catalog Number: 112708

## Product name

MMP8 antibody

## Specificity

Human, Mouse, Rat; other species not tested.

## Antibody description

MMP8 Rabbit Polyclonal antibody. Positive IHC detected in human placenta tissue, human kidney tissue, human ovary tissue, human spleen tissue, human testis tissue. Positive WB detected in HepG2 cells, Jurkat cells, mouse liver tissue. Positive IP detected in mouse liver tissue. Observed molecular weight by Western-blot: 70 kDa

## Preparation

This antibody was obtained by immunization of MMP8 recombinant protein (Accession Number: NM\_002424). Purification method: Antigen affinity purified.

## Formulation

PBS with 0.02% sodium azide and 50% glycerol pH 7.3.

## Storage

Store at -20°C. DO NOT ALIQUOT

## Clonality

Polyclonal

## Ig Type

Rabbit IgG

## Applications

ELISA, WB, IHC, IP

## Dilutions

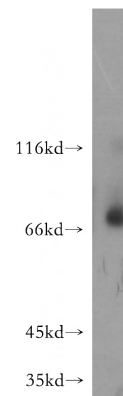
Recommended Dilution:

WB: 1:500-1:5000

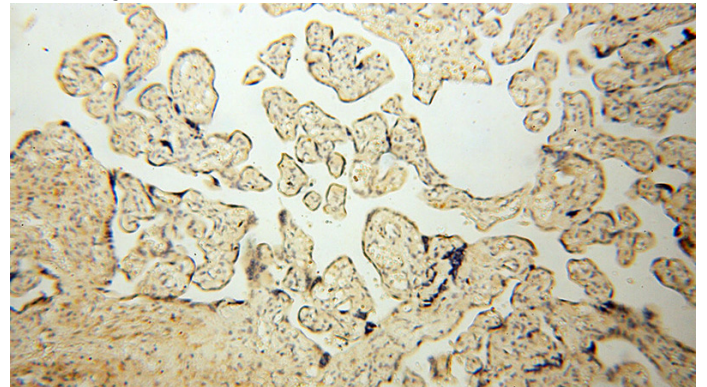
IP: 1:200-1:2000

IHC: 1:20-1:200

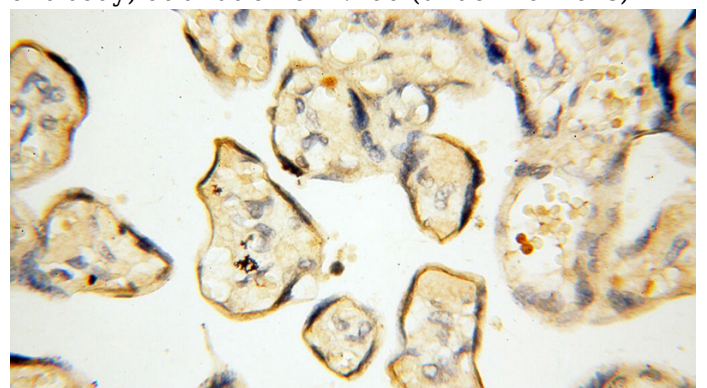
## Validations



HepG2 cells were subjected to SDS PAGE followed by western blot with Catalog No:112708(MMP8 antibody) at dilution of 1:500



Immunohistochemical of paraffin-embedded human placenta using Catalog No:112708(MMP8 antibody) at dilution of 1:100 (under 10x lens)



# MMP8 antibody

Catalog Number: 112708

---

Immunohistochemical of paraffin-embedded human placenta using Catalog No:112708(MMP8 antibody) at dilution of 1:100 (under 40x lens)

IP Result of anti-MMP8 (IP:Catalog No:112708, 4ug; Detection:Catalog No:112708 1:500) with mouse liver tissue lysate 3600ug.

