

# ATP6V1C1 antibody



Catalog Number: 108308

## Product name

ATP6V1C1 antibody

## Specificity

human, mouse, rat; other species not tested.

## Antibody description

ATP6V1C1 Rabbit Polyclonal antibody. Positive WB detected in NIH/3T3 cells, human brain tissue, human testis tissue. Positive IHC detected in human stomach cancer. Observed molecular weight by Western-blot: 42-44kd

## Preparation

This antibody was obtained by immunization of ATP6V1C1 recombinant protein (Accession Number: NM\_001695). Purification method: Antigen affinity purified.

## Formulation

PBS with 0.02% sodium azide and 50% glycerol pH 7.3.

## Storage

Store at -20°C. DO NOT ALIQUOT

## Clonality

Polyclonal

## Ig Type

Rabbit IgG

## Applications

ELISA, WB, IHC

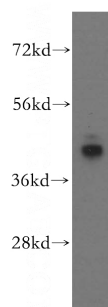
## Dilutions

Recommended Dilution:

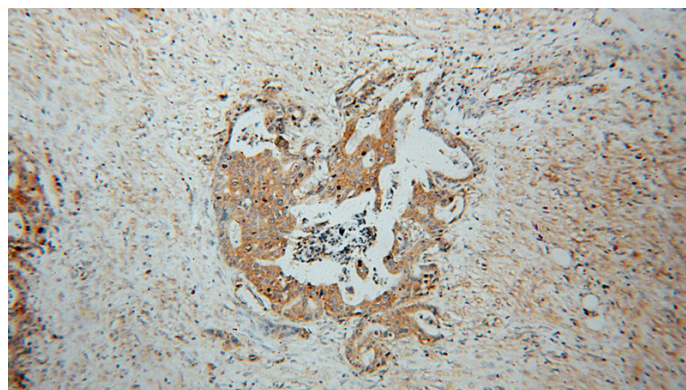
WB: 1:500-1:5000

IHC: 1:20-1:200

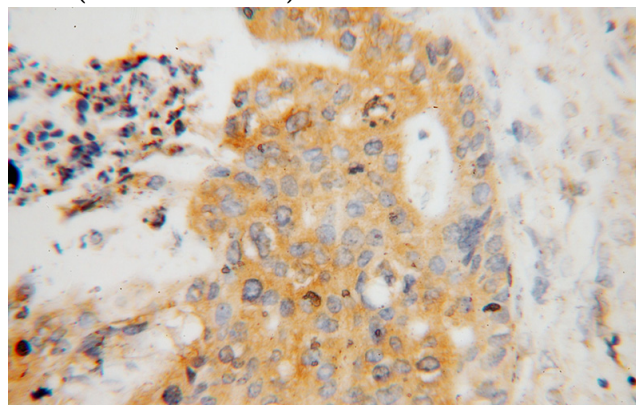
## Validations



NIH/3T3 cells were subjected to SDS PAGE followed by western blot with Catalog No:108308(ATP6V1C1 antibody) at dilution of 1:400



Immunohistochemical of paraffin-embedded human stomach cancer using Catalog No:108308(ATP6V1C1 antibody) at dilution of 1:50 (under 10x lens)



Immunohistochemical of paraffin-embedded human stomach cancer using Catalog

# ATP6V1C1 antibody



Catalog Number: 108308

---

No:108308(ATP6V1C1 antibody) at dilution of 1:50 (under 40x lens)