

NOTCH1 antibody

Catalog Number: 113308

Product name

NOTCH1 antibody

WB: 1:200-1:2000

IP: 1:200-1:1000

Specificity

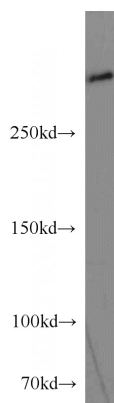
Human, Mouse, Rat, Zebrafish; other species not tested.

IHC: 1:50-1:500

Antibody description

NOTCH1 Rabbit Polyclonal antibody. Positive IP detected in HepG2 cells. Positive WB detected in HepG2 cells, HeLa cells. Positive IHC detected in human kidney tissue, human lung tissue, human ovary tumor tissue, human spleen tissue, mouse brain tissue, mouse liver tissue. Observed molecular weight by Western-blot: 270-300 kDa

Validations



Preparation

This antibody was obtained by immunization of Peptide (Accession Number: NM_017617). Purification method: Antigen affinity purified.

HepG2 cells were subjected to SDS PAGE followed by western blot with Catalog No:113308(NOTCH1 antibody) at dilution of 1:500

Formulation

PBS with 0.02% sodium azide and 50% glycerol pH 7.3.

Storage

Store at -20°C. DO NOT ALIQUOT

Clonality

Polyclonal

Ig Type

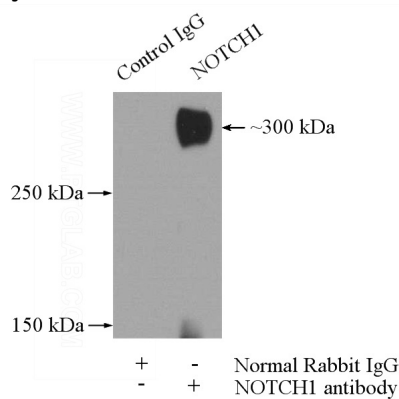
Rabbit IgG

Applications

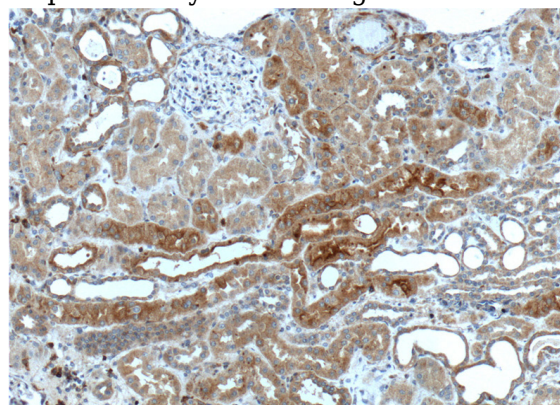
ELISA, WB, IP, IHC

Dilutions

Recommended Dilution:



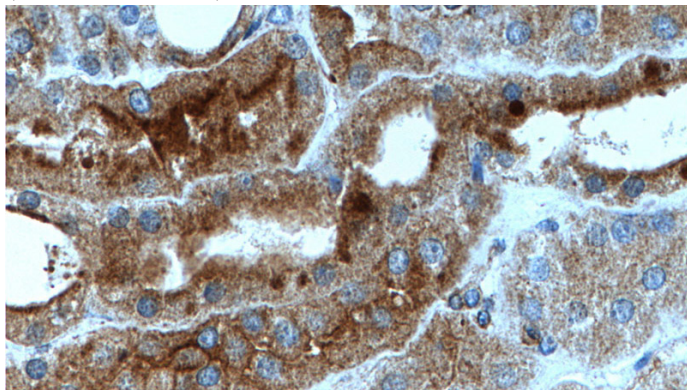
IP Result of anti-NOTCH1 (IP:Catalog No:113308, 5ug; Detection:Catalog No:113308 1:200) with HepG2 cells lysate 2400ug.



NOTCH1 antibody

Catalog Number: 113308

Immunohistochemistry of paraffin-embedded human kidney tissue slide using Catalog No:113308(NOTCH1 Antibody) at dilution of 1:200 (under 10x lens).



Immunohistochemistry of paraffin-embedded human kidney tissue slide using Catalog No:113308(NOTCH1 Antibody) at dilution of 1:200 (under 40x lens).