

RBM26 antibody



Catalog Number: 114608

Product name

RBM26 antibody

IP: 1:200-1:2000

IHC: 1:20-1:200

Specificity

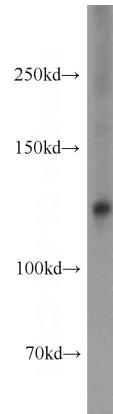
Human, Mouse, Rat; other species not tested.

IF: 1:20-1:200

Antibody description

RBM26 Rabbit Polyclonal antibody. Positive IP detected in HEK-293 cells. Positive WB detected in Jurkat cells, HEK-293 cells. Positive IF detected in HepG2 cells. Positive IHC detected in human brain tissue. Observed molecular weight by Western-blot: 125 kDa

Validations



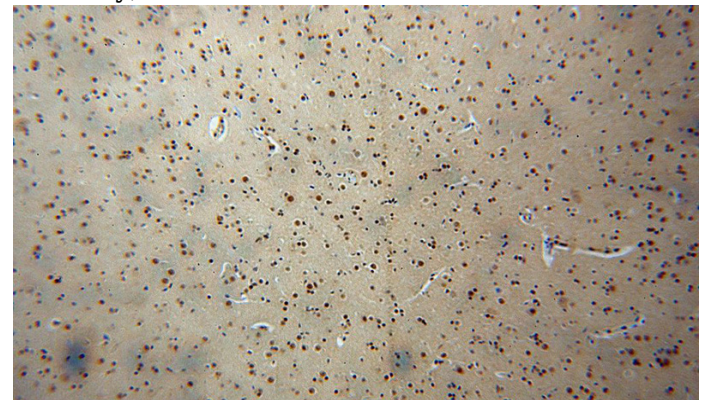
Preparation

This antibody was obtained by immunization of RBM26 recombinant protein (Accession Number: BC000791). Purification method: Antigen affinity purified.

Jurkat cells were subjected to SDS PAGE followed by western blot with Catalog No:114608(RBM26 antibody) at dilution of 1:1000

Formulation

PBS with 0.02% sodium azide and 50% glycerol pH 7.3.



Storage

Store at -20°C. DO NOT ALIQUOT

Clonality

Polyclonal

Ig Type

Rabbit IgG

Applications

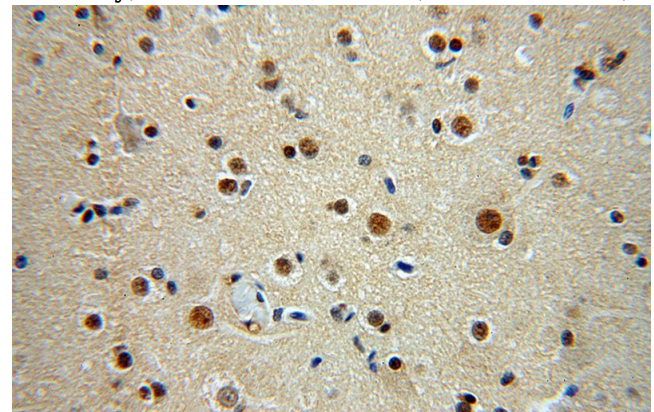
ELISA, WB, IHC, IF, IP

Dilutions

Recommended Dilution:

WB: 1:500-1:5000

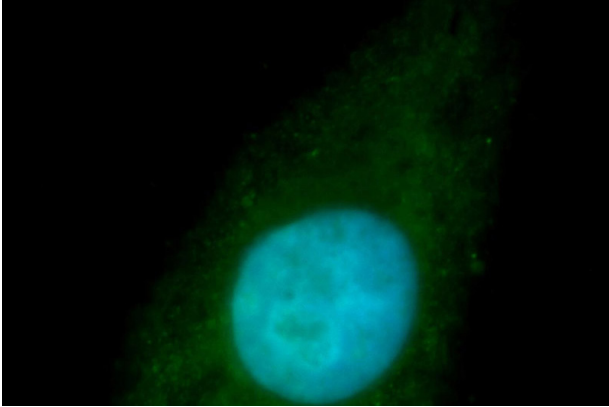
Immunohistochemical of paraffin-embedded human brain using Catalog No:114608(RBM26 antibody) at dilution of 1:100 (under 10x lens)



RBM26 antibody

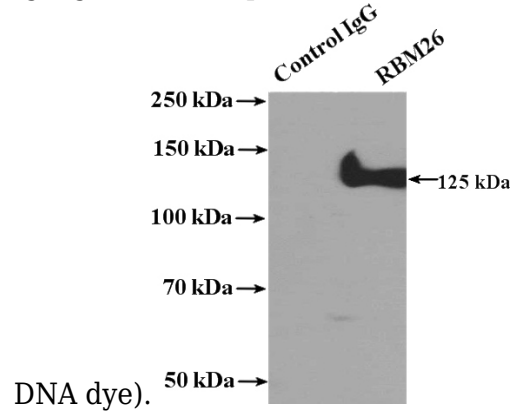
Catalog Number: 114608

Immunohistochemical of paraffin-embedded human brain using Catalog No:114608(RBM26 antibody) at dilution of 1:100 (under 40x lens)



Immunofluorescent analysis of HepG2 cells, using RBM26 antibody Catalog No:114608 at 1:100

dilution and FITC-labeled donkey anti-rabbit IgG(green). Blue pseudocolor = DAPI (fluorescent



IP Result of anti-RBM26 (IP:Catalog No:114608, 4ug; Detection:Catalog No:114608 1:500) with HEK-293 cells lysate 2800ug.