

# Arylsulfatase D antibody



Catalog Number: 108208

## Product name

Arylsulfatase D antibody

## Specificity

Human; other species not tested.

## Antibody description

Arylsulfatase D Rabbit Polyclonal antibody. Positive IHC detected in human breast cancer tissue. Positive WB detected in human placenta tissue. Observed molecular weight by Western-blot: 65kd

## Preparation

This antibody was obtained by immunization of Arylsulfatase D recombinant protein (Accession Number: BC020229). Purification method: Antigen affinity purified.

## Formulation

PBS with 0.1% sodium azide and 50% glycerol pH 7.3.

## Storage

Store at -20°C. DO NOT ALIQUOT

## Clonality

Polyclonal

## Ig Type

Rabbit IgG

## Applications

ELISA, WB, IHC

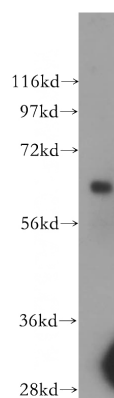
## Dilutions

Recommended Dilution:

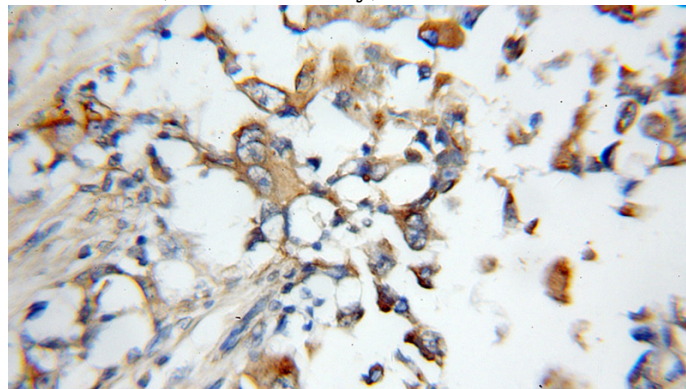
WB: 1:500-1:5000

IHC: 1:20-1:200

## Validations



human placenta tissue were subjected to SDS PAGE followed by western blot with Catalog No:108208(ARSD antibody) at dilution of 1:500



Immunohistochemical of paraffin-embedded human breast cancer using Catalog No:108208(ARSD antibody) at dilution of 1:50 (under 10x lens)