

Catalog Number: 167208

## Product name

Anti-Creatine Kinase B type Rabbit antibody

IHC: 1/50

ICC/IF: 1/50

## Specificity

Human, Mouse, Rat

FC: 1/20

IP: 1/20

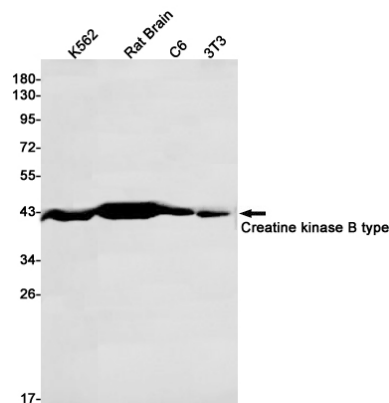
## Antibody description

Creatine Kinase B type Rabbit polyclonal antibody

## Validations

## Preparation

Antigen: A synthetic peptide of human Creatine kinase B type



## Formulation

Supplied in 50nM Tris-Glycine(pH 7.4), 0.15M NaCl, 40%Glycerol, 0.01% sodium azide and 0.05% BSA.

Western blot detection of Creatine kinase B type in K562, Rat Brain, C6, 3T3 cell lysates using Creatine kinase B type Rabbit pAb(1:1000 diluted). Predicted band size: 43kDa. Observed band size: 43kDa.

## Storage

Store at -20°C. Stable for 12 months from date of receipt.

## Clonality

Polyclonal

## Ig Type

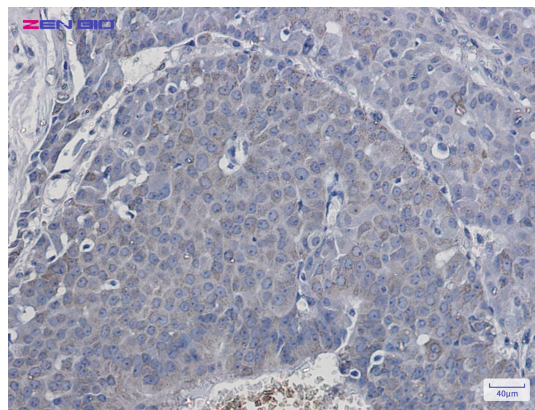
Rabbit IgG

## Applications

WB, IHC-P, ICC/IF, FC, IP

## Dilutions

WB: 1/2000-1/10000



Immunohistochemistry of Creatine kinase B type in paraffin-embedded Human breast cancer tissue using Creatine kinase B type Rabbit pAb at dilution 1/50