

SERPINE2 antibody



Catalog Number: 115208

Product name

SERPINE2 antibody

WB: 1:200-1:2000

IP: 1:200-1:1000

Specificity

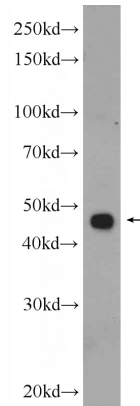
Human, Mouse, Rat; other species not tested.

IHC: 1:20-1:200

Antibody description

SERPINE2 Rabbit Polyclonal antibody. Positive IHC detected in human testis tissue, human pancreas cancer tissue. Positive WB detected in C6 cells, A549 cells, MCF7 cells, rat brain tissue, rat heart tissue. Positive IP detected in A549 cells. Observed molecular weight by Western-blot: 44-50 kDa

Validations



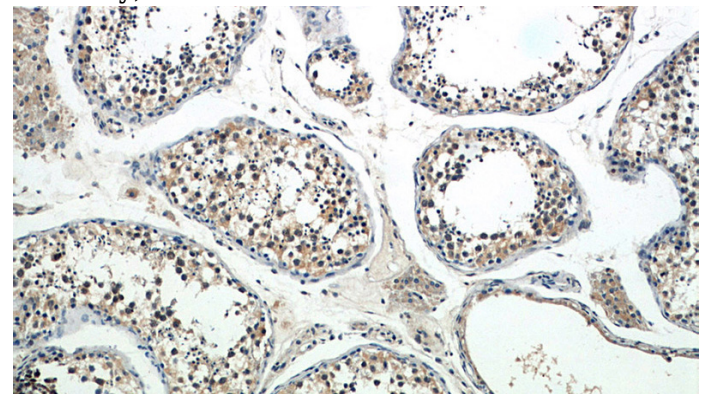
Preparation

This antibody was obtained by immunization of SERPINE2 recombinant protein (Accession Number: XM_017004330). Purification method: Antigen affinity purified.

C6 cells were subjected to SDS PAGE followed by western blot with Catalog No:115208(SERPINE2 Antibody) at dilution of 1:600

Formulation

PBS with 0.02% sodium azide and 50% glycerol pH 7.3.



Storage

Store at -20°C. DO NOT ALIQUOT

Clonality

Polyclonal

Immunohistochemistry of paraffin-embedded human testis slide using Catalog No:115208(SERPINE2 Antibody) at dilution of

Ig Type

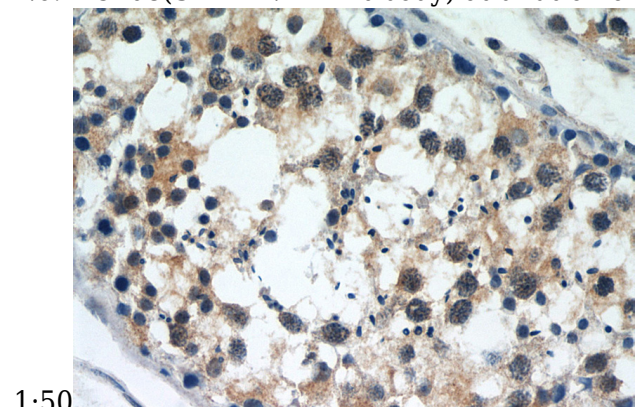
Rabbit IgG

Applications

ELISA, IHC, WB, IP

Dilutions

Recommended Dilution:



1:50

SERPINE2 antibody

Catalog Number: 115208

Immunohistochemistry of paraffin-embedded human testis slide using Catalog No:115208(SERPINE2 Antibody) at dilution of

IP Result of anti-SERPINE2 (IP:Catalog No:115208, 3ug; Detection:Catalog No:115208 1:300) with A549 cells lysate 2800ug.

