

# LGI3 antibody

Catalog Number: 112208

## Product name

LGI3 antibody

WB: 1:500-1:5000

IHC: 1:20-1:200

## Specificity

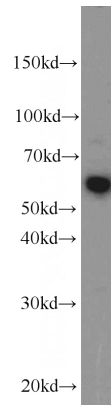
Human, Mouse, Rat; other species not tested.

IF: 1:20-1:200

## Antibody description

LGI3 Rabbit Polyclonal antibody. Positive WB detected in HepG2 cells, A549 cells, HeLa cells, mouse liver tissue, mouse lung tissue. Positive FC detected in HepG2 cells. Positive IF detected in HepG2 cells. Positive IHC detected in human lung tissue, human brain tissue. Observed molecular weight by Western-blot: 55-62 kDa

## Validations



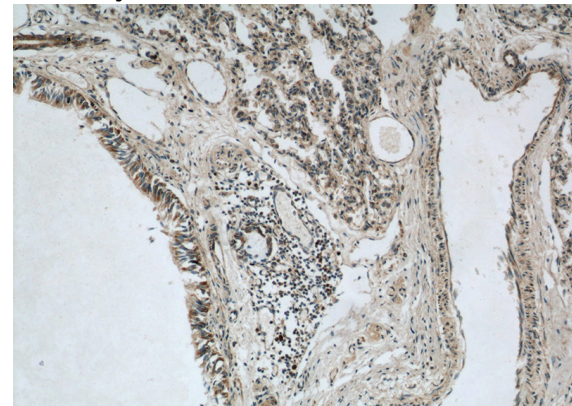
## Preparation

This antibody was obtained by immunization of LGI3 recombinant protein (Accession Number: BC142997). Purification method: Antigen affinity purified.

HepG2 cells were subjected to SDS PAGE followed by western blot with Catalog No:112208(LGI3 antibody) at dilution of 1:1000

## Formulation

PBS with 0.02% sodium azide and 50% glycerol pH 7.3.



## Storage

Store at -20°C. DO NOT ALIQUOT

## Clonality

Polyclonal

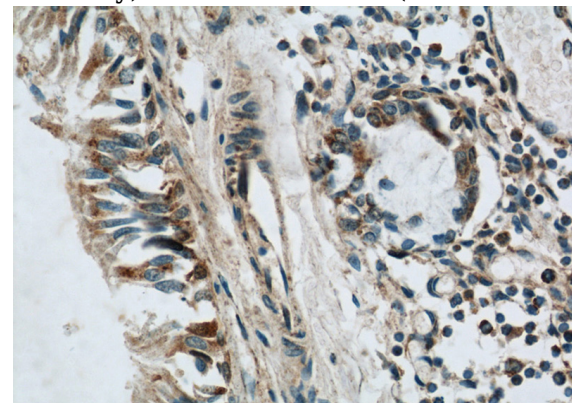
## Ig Type

Rabbit IgG

## Applications

ELISA, IHC, IF, FC, WB

Immunohistochemical of paraffin-embedded human lung using Catalog No:112208(LGI3 antibody) at dilution of 1:50 (under 10x lens)



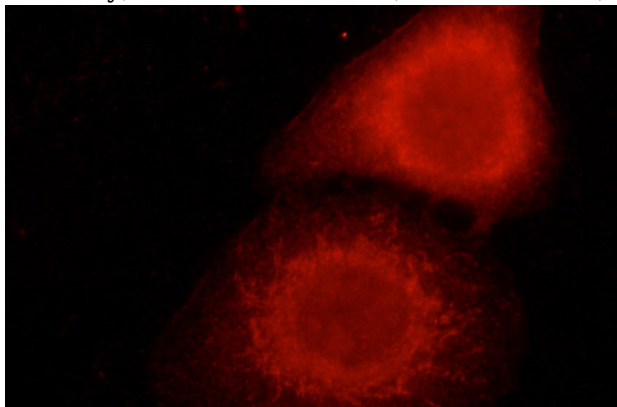
## Dilutions

Recommended Dilution:

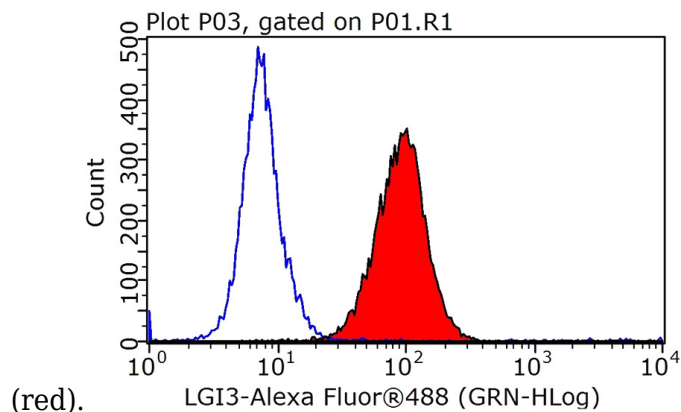
# LGI3 antibody

Catalog Number: 112208

Immunohistochemical of paraffin-embedded human lung using Catalog No:112208(LGI3 antibody) at dilution of 1:50 (under 40x lens)



Immunofluorescent analysis of HepG2 cells using Catalog No:112208 (LGI3 Antibody) at dilution of 1:50 and Rhodamine-labeled goat anti-Rabbit IgG



1X10<sup>6</sup> HepG2 cells were stained with 0.2ug LGI3 antibody (Catalog No:112208, red) and control antibody (blue). Fixed with 90% MeOH blocked with 3% BSA (30 min). Alexa Fluor 488-conjugated AffiniPure Goat Anti-Rabbit IgG(H+L) with dilution 1:1000.