

# GRIM19 antibody



Catalog Number: 111208

## Product name

GRIM19 antibody

Recommended Dilution:

WB: 1:500-1:5000

## Specificity

Human, Mouse, Rat; other species not tested.

IP: 1:200-1:2000

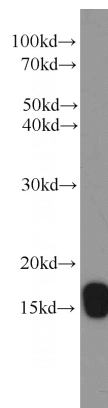
IHC: 1:20-1:200

## Antibody description

GRIM19 Rabbit Polyclonal antibody. Positive IP detected in HEK-293 cells. Positive WB detected in human placenta tissue, HEK-293 cells, HeLa cells, Jurkat cells, MCF7 cells. Positive IHC detected in human prostate cancer tissue, human heart tissue, human kidney tissue. Positive IF detected in MCF-7 cells, HeLa cells. Observed molecular weight by Western-blot: 16.5kd

IF: 1:20-1:200

## Validations



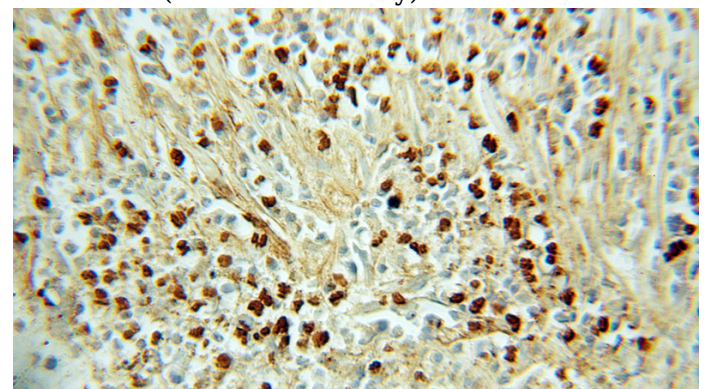
## Preparation

This antibody was obtained by immunization of GRIM19 recombinant protein (Accession Number: NM\_015965). Purification method: Antigen affinity purified.

human placenta tissue were subjected to SDS PAGE followed by western blot with Catalog No:111208(GRIM19 antibody) at dilution of 1:800

## Formulation

PBS with 0.1% sodium azide and 50% glycerol pH 7.3.



## Storage

Store at -20°C. DO NOT ALIQUOT

Immunohistochemical of paraffin-embedded human prostate cancer using Catalog No:111208(GRIM19 antibody) at dilution of 1:50 (under 10x lens)

## Clonality

Polyclonal

## Ig Type

Rabbit IgG

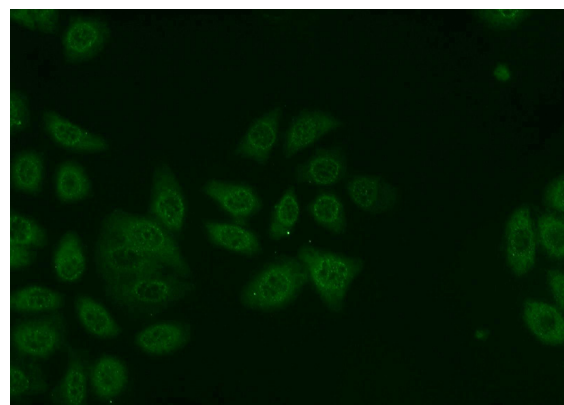
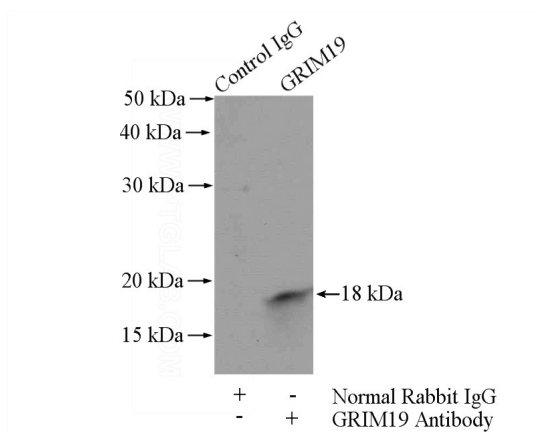
## Applications

ELISA, WB, IHC, IF, IP

## Dilutions

# GRIM19 antibody

Catalog Number: 111208



Immunofluorescent analysis of MCF-7 cells using Catalog No:111208(GRIM19 Antibody) at dilution of 1:50 and Alexa Fluor 488-conjugated AffiniPure Goat Anti-Rabbit IgG(H+L)

IP Result of anti-GRIM19 (IP:Catalog No:111208, 4ug; Detection:Catalog No:111208 1:500) with HEK-293 cells lysate 2000ug.