

Anti-S-tag antibody



Catalog Number: 100208

Product name

Anti-S-tag antibody

Specificity

Recognize N-terminal and C-terminal S tag in fusion proteins

Antibody description

Rabbit polyclonal to S-tag

Preparation

Produced in rabbits immunized with a synthetic peptide corresponding to the S-tag sequence (KETAAAKFERQHMS), and purified by antigen affinity chromatography.

Formulation

0.2 µm filtered solution in PBS

Storage

This antibody can be stored at 2°C-8°C for one month without detectable loss of activity. Antibody products are stable for twelve months from date of receipt when stored at -20°C to -80°C.

Preservative-Free.

Sodium azide is recommended to avoid contamination (final concentration 0.05%-0.1%). It is toxic to cells and should be disposed of properly. Avoid repeated freeze-thaw cycles.

Clonality

Polyclonal

Ig Type

Rabbit IgG

Applications

WB, IP, ICC/IF

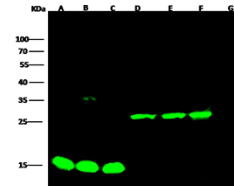
Dilutions

WB: 0.1-0.5 µg/ml

ICC/IF: 0.1-1.0 µg/mL

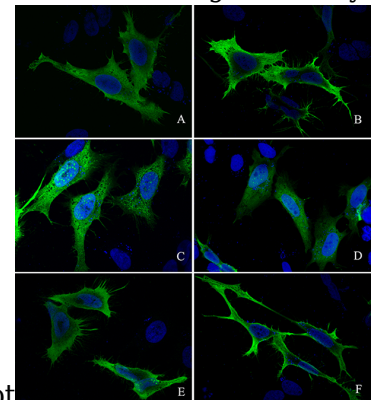
IP: 0.5-2 µg/mg of lysate

Validations



Lanes	A	B	C	D	E	F	G
Items	Stag-GFERh(C) transfected 293 cell lysate	his-GFER-Stag(C) transfected 293 cell lysate	his-Stag-GFERh(C) transfected 293 cell lysate	Stag-GSTT2h(C) transfected 293 cell lysate	his-Stag-GSTT2(C) transfected 293 cell lysate	his-GSTT2-Stag(C) transfected 293 cell lysate	Negative control
Sample Volume (µg/lane)	2	2	2	10	10	10	10
Get	13% SDS-PAGE reducing gel						
Recommended Concentration	0.1-0.5 µg/ml						
Secondary Antibody	Dylight 800 labeled Antibody To Rabbit IgG (H+L), at 1:5000 dilution.						
	Developed using Odyssey imaging system.						

Anti-S-tag Antibody, Rabbit Pab, Antigen Affinity



Purified Western Blot

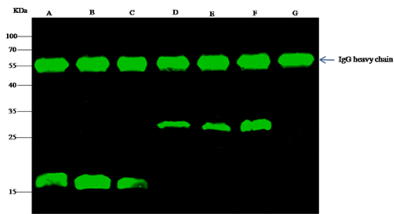
Anti-S-tag Antibody, Rabbit Pab, Antigen Affinity Purified, Immunohistochemistry

Immunofluorescence staining of S-Tag in HeLa cells, transfected with pSTEP2-Stag-GFERh (Figure A), pSTEP2-his-GFER-Stag (Figure B), pSTEP2-his-Stag-GFER (Figure C), pSTEP2-Stag-GSTT2h (Figure D), pSTEP2-his-Stag-GSTT2 (Figure E) and pSTEP2-his-GSTT2-Stag (Figure F). Cells were fixed with 4% PFA, permeabilized with 0.3% Triton X-100 in PBS, blocked with 10% serum, and incubated with Mouse anti-S-Tag monoclonal antibody at 37°C 1 hour. Then cells were stained with the Alexa Fluor® 488-conjugated Goat Anti-mouse IgG secondary antibody (green) and counterstained with DAPI

Anti-S-tag antibody



Catalog Number: 100208



Anti-S-tag Antibody, Rabbit Pab, Antigen Affinity Purified, Immunoprecipitation

(blue).

Lanes	A	B	C	D	E	F	G
Sample (whole cell lysate)	Stag ⁻ -GFERh(C)	his-GFER ⁻ -Stag(C)	his-Stag ⁻ -GFER(C)	Stag ⁻ -GSTT2h(C)	his-Stag ⁻ -GSTT2(C)	his-GSTT2 ⁻ -Stag(C)	pSTEP2
Sample quantity	0.5 mg						
IP antibody quantity	2 µg						
Protein G agarose	15 µl of 50% Protein G Agarose						
Gel	13% SDS-PAGE reducing gel						
Primary antibody	KLH-SMCC- <i>hisA1290</i> antibody at 1 µg/ml						
Secondary antibody	DyLight 800-labeled antibody to rabbit IgG (H+L), at 1:5000 dilution						