

# Anti-Inhibin beta A Rabbit antibody



Catalog Number: 168908

## Product name

Anti-Inhibin beta A Rabbit antibody

## Specificity

Human, Mouse, Rat

## Antibody description

Inhibin beta A Rabbit monoclonal antibody

## Preparation

Antigen: A synthetic peptide of human Inhibin beta A

## Formulation

50nM Tris-Glycine(pH 7.4), 0.15M NaCl, 40%Glycerol, 0.01% sodium azide and 0.05% BSA.

## Storage

Store at 4°C short term. Store at -20°C long term. Avoid freeze / thaw cycle.

## Clonality

Monoclonal

## Ig Type

Rabbit IgG

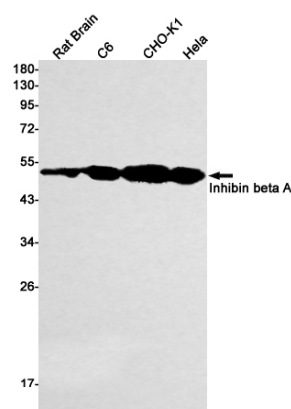
## Applications

WB

## Dilutions

WB: 1/1000-1/5000

## Validations



Western blot detection of Inhibin beta A in Rat Brain, C6, CHO-K1, HeLa cell lysates using Inhibin beta A Rabbit mAb(1:1000 diluted). Predicted band size: 47kDa. Observed band size: 44kDa.