

TCF7L2 antibody

Catalog Number: 115908

Product name

TCF7L2 antibody

Specificity

Human, Mouse, Rat; other species not tested.

Antibody description

TCF7L2 Rabbit Polyclonal antibody. Positive WB detected in mouse liver tissue, human brain tissue, human heart tissue, human liver tissue, mouse heart tissue, mouse kidney tissue, mouse placenta tissue, rat liver tissue. Positive IP detected in mouse liver tissue. Observed molecular weight by Western-blot: 68 kDa

Preparation

This antibody was obtained by immunization of TCF7L2 recombinant protein (Accession Number: NM_001146284). Purification method: Antigen affinity purified.

Formulation

PBS with 0.02% sodium azide and 50% glycerol pH 7.3.

Storage

Store at -20°C. DO NOT ALIQUOT

Clonality

Polyclonal

Ig Type

Rabbit IgG

Applications

ELISA, WB, IP

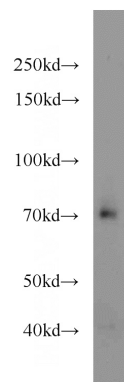
Dilutions

Recommended Dilution:

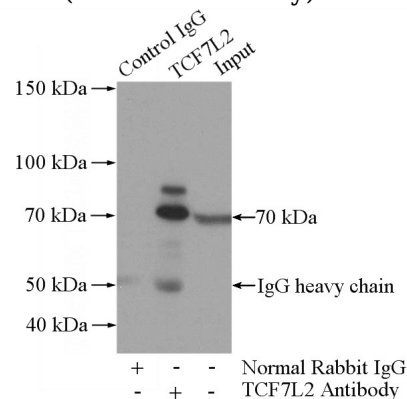
WB: 1:200-1:2000

IP: 1:500-1:5000

Validations



mouse liver tissue were subjected to SDS PAGE followed by western blot with Catalog No:115908(TCF7L2 antibody) at dilution of 1:1000



IP Result of anti-TCF7L2 (IP:Catalog No:115908, 4ug; Detection:Catalog No:115908 1:1000) with mouse liver tissue lysate 4000ug.