

# MX1 antibody

Catalog Number: 112908

## Product name

MX1 antibody

WB: 1:200-1:2000

IP: N/AIHC: 1:20-1:200

## Specificity

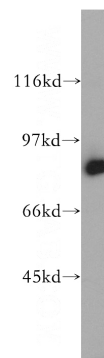
Human, Mouse; other species not tested.

IF: 1:20-1:200

## Antibody description

MX1 Rabbit Polyclonal antibody. Positive WB detected in mouse spleen tissue, A549 cells, mouse lung tissue, NIH/3T3 cells. Positive IP detected in A549 cells. Positive IHC detected in human lung cancer tissue, human tonsillitis tissue. Positive IF detected in A549 cells. Observed molecular weight by Western-blot: 76 kDa

## Validations



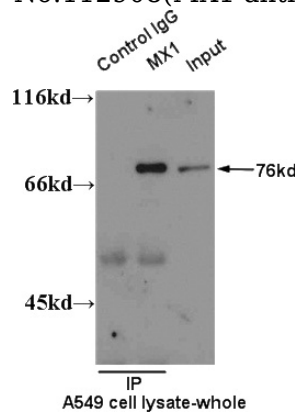
## Preparation

This antibody was obtained by immunization of MX1 recombinant protein (Accession Number: XM\_005260980). Purification method: Antigen affinity purified.

mouse spleen tissue were subjected to SDS PAGE followed by western blot with Catalog No:112908(MX1 antibody) at dilution of 1:300

## Formulation

PBS with 0.02% sodium azide and 50% glycerol pH 7.3.



## Storage

Store at -20°C. DO NOT ALIQUOT

## Clonality

Polyclonal

## Ig Type

Rabbit IgG

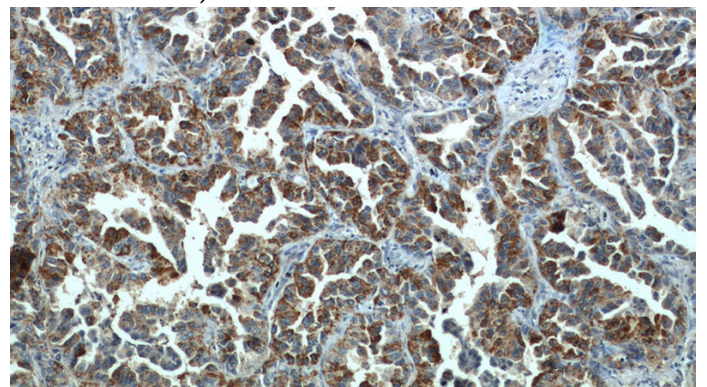
## Applications

ELISA, WB, IHC, IP, IF

## Dilutions

Recommended Dilution:

IP result of anti-MX1 (Catalog No:112908 for IP and Detection) with A549 cell.



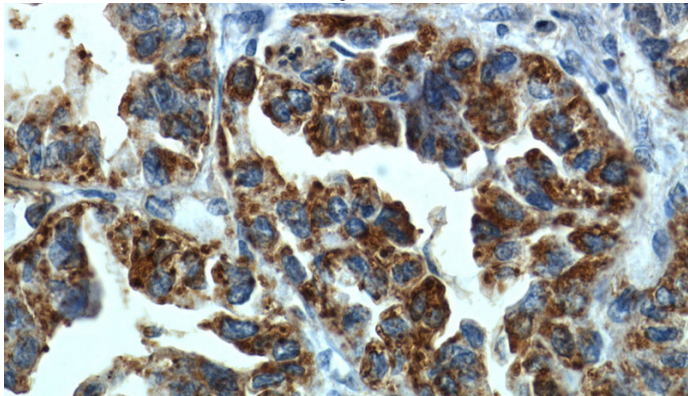
Immunohistochemistry of paraffin-embedded

# MX1 antibody

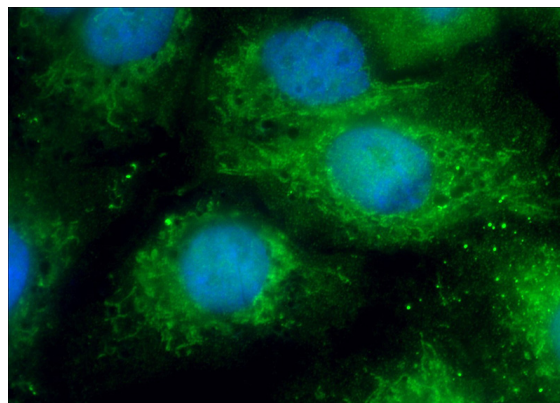
Catalog Number: 112908

---

human lung cancer slide using Catalog  
No:112908(MX1 Antibody) at dilution of 1:50



Immunohistochemistry of paraffin-embedded  
human lung cancer slide using Catalog  
No:112908(MX1 Antibody) at dilution of 1:50



Immunofluorescent analysis of (10%  
Formaldehyde) fixed A549 cells using Catalog  
No:112908(MX1 Antibody) at dilution of 1:50 and  
Alexa Fluor 488-conjugated AffiniPure Goat Anti-  
Rabbit IgG(H+L)