

## Product name

Anti-GYPA / CD235a / Glycophorin A antibody

## Immunogen

[Human GYPA / CD235a / Glycophorin A \(His Tag\) recombinant protein](#)

## Specificity

Human GYPA / CD235a / Glycophorin A

## Antibody description

Rabbit polyclonal to GYPA / CD235a / Glycophorin A

## Preparation

Produced in rabbits immunized with purified, recombinant Human GYPA / CD235a / Glycophorin A (rh GYPA / CD235a / Glycophorin A; P02724; Met1-Glu91). GYPA / CD235a / Glycophorin A specific IgG was purified by Human GYPA / CD235a / Glycophorin A affinity chromatography.

## Formulation

0.2 µm filtered solution in PBS

## Storage

This antibody can be stored at 2°C-8°C for one month without detectable loss of activity. Antibody products are stable for twelve months from date of receipt when stored at -20°C to -80°C. Preservative-Free.

Sodium azide is recommended to avoid contamination (final concentration 0.05%-0.1%). It is toxic to cells and should be disposed of properly. Avoid repeated freeze-thaw cycles.

## Clonality

Polyclonal

## Ig Type

Rabbit IgG

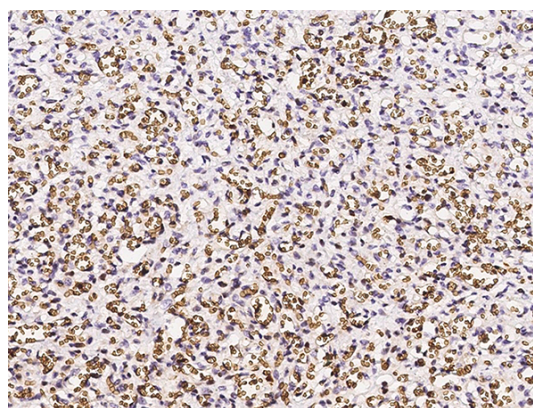
## Applications

IHC-P

## Dilutions

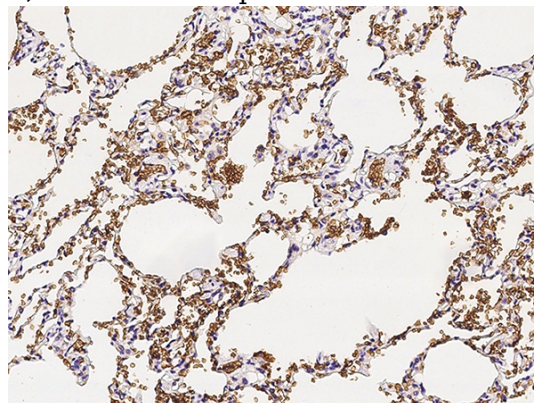
IHC-P: 0.1-2 µg/mL

## Validations



GYPA / CD235a / Glycophorin A Antibody, Rabbit PAb, Antigen Affinity Purified, Immunohistochemistry

Immunochemical staining of human GYPA in human placenta with rabbit polyclonal antibody (0.5 µg/mL, formalin-fixed paraffin embedded



sections).

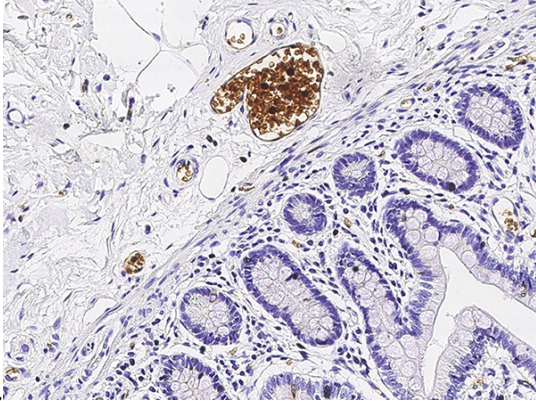
GYPA / CD235a / Glycophorin A Antibody, Rabbit PAb, Antigen Affinity Purified, Immunohistochemistry

Immunochemical staining of human GYPA in human lung with rabbit polyclonal antibody (0.5

Catalog Number: 100908

---

µg/mL, formalin-fixed paraffin embedded



GYPA / CD235a / Glycophorin A Antibody, Rabbit PAb, Antigen Affinity Purified, Immunohistochemistry

Immunochemical staining of human GYPA in human small intestine with rabbit polyclonal antibody (0.5 µg/mL, formalin-fixed paraffin embedded sections).

sections).