

# SOS1 antibody

Catalog Number: 115508

## Product name

SOS1 antibody

## Specificity

Human, Mouse, Rat; other species not tested.

## Antibody description

SOS1 Rabbit Polyclonal antibody. Positive IF detected in HeLa cells. Positive IP detected in mouse brain tissue. Positive WB detected in mouse brain tissue, K-562 cells. Observed molecular weight by Western-blot: 150 kDa

## Preparation

This antibody was obtained by immunization of Peptide (Accession Number: NM\_005633). Purification method: Antigen affinity purified.

## Formulation

0.1M NaHCO<sub>3</sub>, 0.1M glycine, 0.02% sodium azide and 50% glycerol pH 7.3.

## Storage

Store at -20°C. DO NOT ALIQUOT

## Clonality

Polyclonal

## Ig Type

Rabbit IgG

## Applications

ELISA, WB, IF, IP

## Dilutions

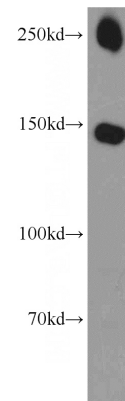
Recommended Dilution:

WB: 1:500-1:5000

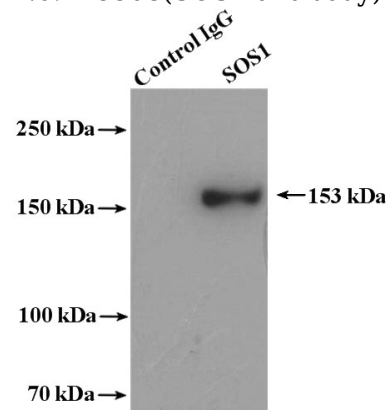
IP: 1:200-1:2000

IF: 1:10-1:100

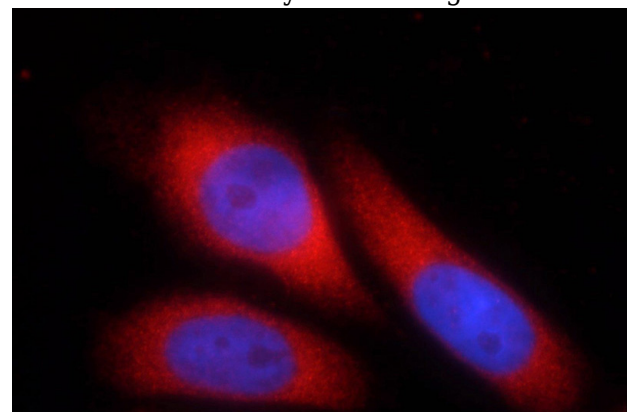
## Validations



mouse brain tissue were subjected to SDS PAGE followed by western blot with Catalog No:115508(SOS1 antibody) at dilution of 1:500



IP Result of anti-SOS1 (IP:Catalog No:115508, 4ug; Detection:Catalog No:115508 1:500) with mouse brain tissue lysate 4000ug.



Immunofluorescent analysis of HeLa cells using Catalog No:115508(SOS1 Antibody) at dilution of 1:25 and Rhodamine-Goat anti-Rabbit IgG