

# MPG Polyclonal Antibody



Catalog Number: 164508

## Product name

MPG Polyclonal Antibody

## Specificity

Human, Mouse, Rat

## Antibody description

Polyclonal antibody to MPG

## Preparation

Antigen: Recombinant fusion protein containing a sequence corresponding to amino acids 1-293 of human MPG (NP\_001015052.1).

## Formulation

PBS with 0.02% sodium azide, 50% glycerol, pH7.3.

## Storage

Store at -20°C. Avoid freeze / thaw cycles.

## Clonality

Polyclonal

## Ig Type

Rabbit IgG

## Applications

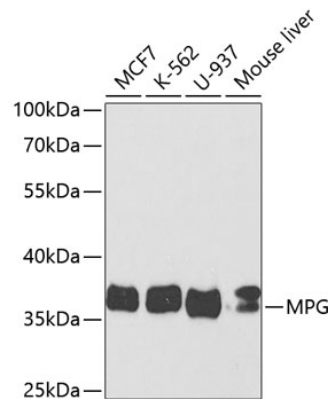
WB, IF

## Dilutions

WB 1:500 - 1:2000

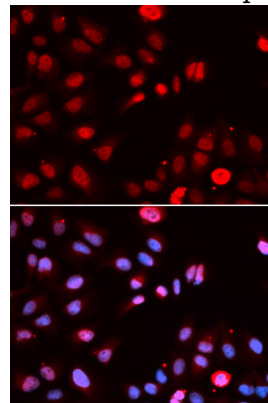
IF 1:50 - 1:100

## Validations



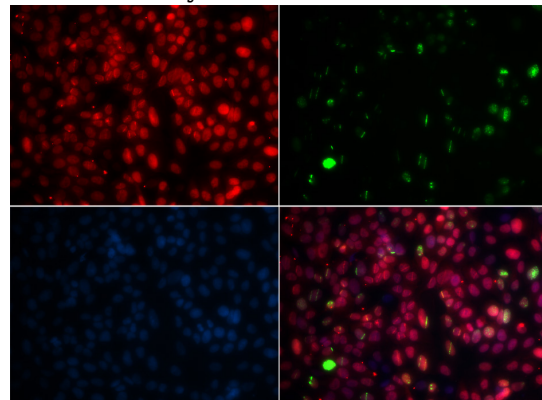
Western blot - MPG Polyclonal Antibody

Western blot analysis of extracts of various cell lines, using MPG antibody at 1:1000 dilution. Secondary antibody: HRP Goat Anti-Rabbit IgG (H+L) at 1:10000 dilution. Lysates/proteins: 25ug per lane. Blocking buffer: 3% nonfat dry milk in TBST. Detection: ECL Enhanced Kit. Exposure time: 40s.



Immunofluorescence - MPG Polyclonal Antibody

Immunofluorescence analysis of U2OS cells using MPG antibody. Blue: DAPI for nuclear staining.



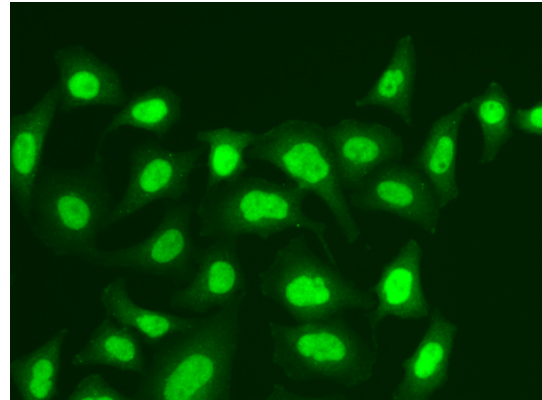
# MPG Polyclonal Antibody

Catalog Number: 164508

---

## Immunofluorescence - MPG Polyclonal Antibody

Immunofluorescence analysis of GFP-RNF168 transgenic U2OS cells using MPG antibody .  
Green: GFP-RNF168 fusion protein expression for DNA damage marker. Blue: DAPI for nuclear staining. RNF168 can be used to mark cells damaged by UV-A laser for they always gather around DNA damage region.



## Immunofluorescence - MPG Polyclonal Antibody

Immunofluorescence analysis of A549 cells using MPG antibody .