

# OSTF1 antibody

Catalog Number: 113508

---

## Product name

OSTF1 antibody

## Specificity

human, mouse, rat; other species not tested.

## Antibody description

OSTF1 Rabbit Polyclonal antibody. Positive IHC detected in human breast cancer. Observed molecular weight by Western-blot: 28kd

## Preparation

This antibody was obtained by immunization of OSTF1 recombinant protein (Accession Number: XM\_006717053). Purification method: Antigen affinity purified.

## Formulation

PBS with 0.1% sodium azide and 50% glycerol pH 7.3.

## Storage

Store at -20°C. DO NOT ALIQUOT

## Clonality

Polyclonal

## Ig Type

Rabbit IgG

## Applications

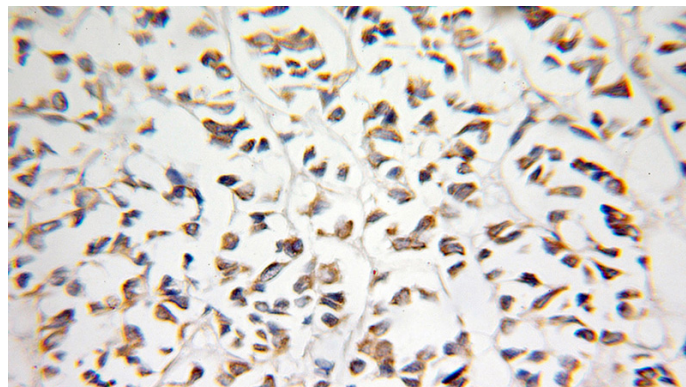
ELISA, IHC

## Dilutions

Recommended Dilution:

IHC: 1:20-1:200

## Validations



Immunohistochemical of paraffin-embedded human breast cancer using Catalog No:113508(OSTF1 antibody) at dilution of 1:100 (under 25x lens)