

Human E-Selectin/CD62e/SELE (His & Fc Tag) recombinant protein



Catalog Number: 503508

General Information

Gene Name Synonym

CD62 antigen-like family member E; Endothelial leukocyte adhesion molecule 1; Leukocyte-endothelial cell adhesion molecule 2

Protein Construction

A DNA sequence encoding the extracellular domain (Met 1-Pro 556) of human CD62E (NP_000441.2) precursor was expressed with the fused C-terminal polyhistidine-tagged Fc region of human IgG1 at the C-terminus.

Organism

Human

Expression Host

Human Cells

QC Testing

Activity

Measured by the ability of the immobilized protein to support the adhesion of U937 human histiocytic lymphoma cells. When cells are added to E-selectin coated plates (2 µg/mL, 100 µL/well) approximately > 60% will adhere specifically.

Purity

> 95 % as determined by SDS-PAGE

Endotoxin

< 1.0 EU per µg of the protein as determined by the LAL method

Stability

Samples are stable for up to twelve months from date of receipt at -70°C

Predicted N terminal

Trp 22

Molecular Mass

The recombinant human CD62E/Fc is a disulfide-linked homodimer after removal of the signal peptide. The reduced monomer consists of 782 amino acids and has a predicted molecular mass of 86.5 kDa. In SDS-PAGE under reducing conditions, the apparent molecular mass of rh CD62E/Fc monomer is approximately 140-150 kDa due to glycosylation.

Formulation

Lyophilized from sterile PBS, pH 7.4

1. 5 % trehalose and mannitol are added as protectants before lyophilization.

2. Please contact us for any concerns or special requirements.

Usage Guide

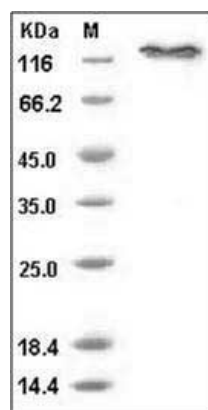
Storage

Store it under sterile conditions at -20°C to -80°C. It is recommended that the protein be aliquoted for optimal storage. Avoid repeated freeze-thaw cycles.

Reconstitution

Adding sterile water, prepare a stock solution of 0.25 mg/ml. Concentration is measured by UV-Vis.

SDS-PAGE



Human E-Selectin/CD62e/SELE (His & Fc Tag) recombinant protein



Catalog Number: 503508

Human E-Selectin / CD62e / SELE Protein (His & Fc Tag) SDS-PAGE