

# Antizyme inhibitor 1 antibody



Catalog Number: 108108

## Product name

Antizyme inhibitor 1 antibody

WB: 1:500-1:5000

IHC: 1:20-1:200

## Specificity

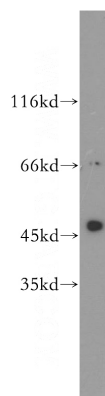
Human, Mouse, Rat; other species not tested.

IF: 1:10-1:100

## Antibody description

Antizyme inhibitor 1 Rabbit Polyclonal antibody. Positive WB detected in human liver tissue, HEK-293 cells, HepG2 cells, mouse liver tissue, PC-3 cells. Positive IHC detected in human gliomas tissue, human liver tissue. Positive IF detected in HepG2 cells. Observed molecular weight by Western-blot: 49.5 kDa

## Validations



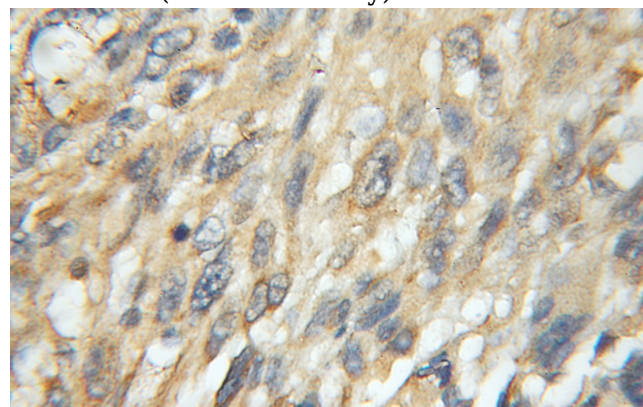
## Preparation

This antibody was obtained by immunization of Antizyme inhibitor 1 recombinant protein (Accession Number: XM\_047421860). Purification method: Antigen affinity purified.

human liver tissue were subjected to SDS PAGE followed by western blot with Catalog No:108108(AZIN1 antibody) at dilution of 1:500

## Formulation

PBS with 0.1% sodium azide and 50% glycerol pH 7.3.



## Storage

Store at -20°C. DO NOT ALIQUOT

## Clonality

Polyclonal

Immunohistochemical of paraffin-embedded human gliomas using Catalog No:108108(AZIN1 antibody) at dilution of 1:50 (under 10x lens)

## Ig Type

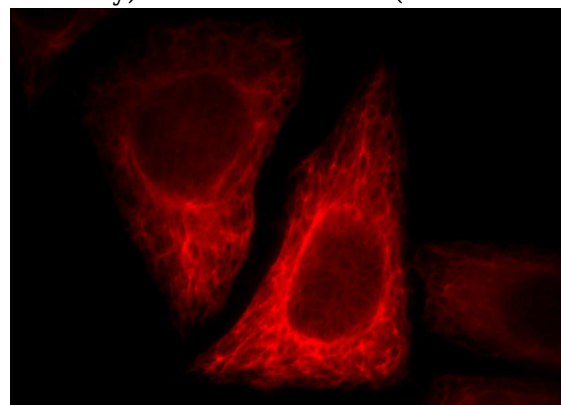
Rabbit IgG

## Applications

ELISA, WB, IHC, IF

## Dilutions

Recommended Dilution:



# Antizyme inhibitor 1 antibody



Catalog Number: 108108

---

Immunofluorescent analysis of HepG2 cells, using AZIN1 antibody Catalog No:108108 at 1:25

dilution and Rhodamine-labeled goat anti-rabbit IgG (red).