

# Anti-STUB1 antibody



Catalog Number: 106108

## Product name

Anti-STUB1 antibody

## Specificity

Human STUB1

## Antibody description

Rabbit monoclonal to STUB1

## Preparation

This antibody was obtained from a rabbit immunized with purified, recombinant Human STUB1 isoform 1 (Q9UNE7-1; Met 1-Tyr 303).

## Formulation

0.2 µm filtered solution in PBS with 5% trehalose

## Storage

This antibody can be stored at 2°C-8°C for one month without detectable loss of activity. Antibody products are stable for twelve months from date of receipt when stored at -20°C to -80°C.

Preservative-Free.

Sodium azide is recommended to avoid contamination (final concentration 0.05%-0.1%). It is toxic to cells and should be disposed of properly. Avoid repeated freeze-thaw cycles.

## Clonality

Monoclonal

## Ig Type

Rabbit IgG

## Applications

ELISA, WB, IP

## Dilutions

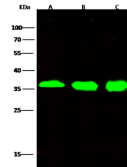
WB: 1-5 µg/mL

ELISA: 0.1-0.2 µg/mL

This antibody can be used at 0.1-0.2 µg/mL with the appropriate secondary reagents to detect Human STUB1. The detection limit for Human STUB1 is 0.0049 ng/well.

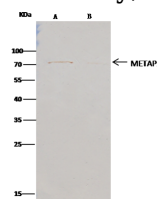
IP: 1-4 µg/mg of lysate

## Validations



Items	Lanes	A	B	C
Sample (whole cell lysate)		HBLA	293T	MCF7
Sample Volume (µg/lane)		30	30	30
Gel	13% SDS-PAGE reducing gel			
Recommended Concentration	1.5 µg/ml			
Secondary Antibody	Dylight 800-labeled Antibody To Rabbit IgG (H+L), at 1:5000 dilution.			
Developed using Odyssey imaging system				
Explanation	Predicted band size: 35 kDa Observed band size: 36 kDa			

## STUB1 Antibody, Rabbit MAb, Western blot



Items	Lanes	A	B
Sample (whole cell lysate)		HepG2	
Sample quantity		0.5 mg	
IP antibody type		mMETAP2 R010	Rabbit blank IgG
IP antibody quantity		2 µg	
Protein G agarose		15 µl of 50% Protein G Agarose	
Gel	13% SDS-PAGE reducing gel		
Primary antibody	mMETAP2 antibody at 5 µg/ml [Cat# S0528 R010]		
Secondary antibody	Clean-Block IP Detection Reagent (HRP) at 1:1000 dilution		

## STUB1 Antibody, Rabbit MAb, Immunoprecipitation