

# SENP1 antibody

Catalog Number: 115108

## Product name

SENP1 antibody

## Specificity

Human; other species not tested.

## Antibody description

SENP1 Rabbit Polyclonal antibody. Positive IHC detected in human ovary tissue, human liver tissue, human testis tissue. Positive WB detected in HepG2 cells, HeLa cells, HL-60 cells, Jurkat cells. Observed molecular weight by Western-blot: 73 kDa

## Preparation

This antibody was obtained by immunization of SENP1 recombinant protein (Accession Number: NM\_001267594). Purification method: Antigen affinity purified.

## Formulation

PBS with 0.1% sodium azide and 50% glycerol pH 7.3.

## Storage

Store at -20°C. DO NOT ALIQUOT

## Clonality

Polyclonal

## Ig Type

Rabbit IgG

## Applications

ELISA, IHC, WB

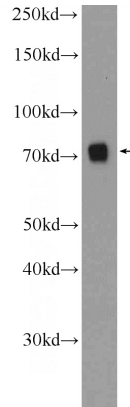
## Dilutions

Recommended Dilution:

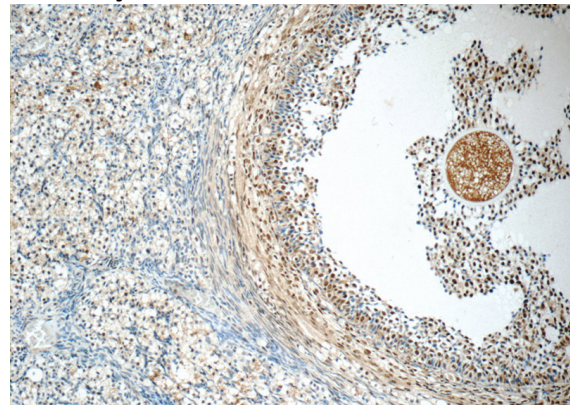
WB: 1:500-1:5000

IHC: 1:20-1:200

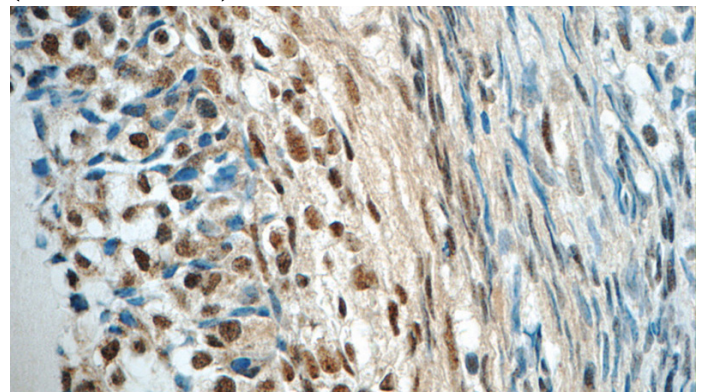
## Validations



HepG2 cells were subjected to SDS PAGE followed by western blot with Catalog No:115108(SENP1 Antibody) at dilution of 1:1000



Immunohistochemistry of paraffin-embedded human ovary tissue slide using Catalog No:115108(SENP1 Antibody) at dilution of 1:50 (under 10x lens)



Immunohistochemistry of paraffin-embedded human ovary tissue slide using Catalog No:115108(SENP1 Antibody) at dilution of 1:50

# SENP1 antibody



Catalog Number: 115108

---

(under 40x lens)