

# Anti-C4.4A/LYPD3 antibody



Catalog Number: 105808

## Product name

Anti-C4.4A/LYPD3 antibody

## Immunogen

[Human C4.4A/LYPD3 \(His Tag\) recombinant protein](#)

## Specificity

Human C4.4A / LYPD3

## Antibody description

Rabbit monoclonal to C4.4A/LYPD3

## Preparation

This antibody was obtained from a rabbit immunized with purified, recombinant Human C4.4A / LYPD3 (rh C4.4A / LYPD3; NP\_055215.2; Met1-His286) and conjugated with PE under optimum conditions, the unreacted PE was removed.

## Formulation

Aqueous solution containing 0.5% BSA and 0.09% sodium azide

## Storage

This antibody is stable for 12 months from date of receipt when stored at 2°C-8°C. Protected from prolonged exposure to light. Do not freeze !

Sodium azide is toxic to cells and should be disposed of properly. Flush with large volumes of water during disposal.

## Clonality

Monoclonal

## Ig Type

Rabbit IgG

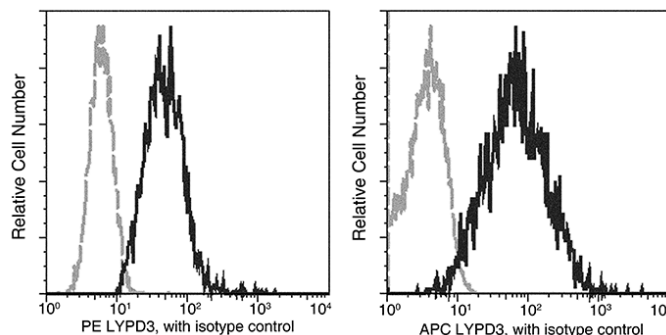
## Applications

FCM

## Dilutions

FCM

## Validations



C4.4A / LYPD3 Antibody (PE), Rabbit MAb, Flow cytometric analysis

Flow cytometric analysis of Human LYPD3 expression on PC-3 cells.