

Human KDR recombinant protein (C-human IgG1-Fc)



Catalog Number: 514808

General Information

Gene Name Synonym

A type III receptor tyrosine kinase, isoform CRA_a

Protein Construction

A DNA sequence encoding the human KDR (NP_002244.1) (Met1-Lys327) was expressed with the Fc region of human IgG1 at the C-terminus.

Organism

Human

Expression Host

Human Cells

QC Testing

Activity

Measured by its ability to inhibit VEGF-dependent proliferation of human umbilical vein endothelial cells (HUVEC) in the presence of 10 ng/mL rhVEGF165. The ED₅₀ for this effect is 40-120ng/mL.

Purity

> 95 % as determined by SDS-PAGE.

Endotoxin

<1.0 EU per µg protein as determined by the LAL method.

Stability

Samples are stable for up to twelve months from date of receipt at -70°C

Predicted N terminal

Ala 20

Molecular Mass

The recombinant human KDR consists of 549 amino acids and predicts a molecular mass of 61.5 kDa.

Formulation

Lyophilized from sterile PBS, pH 7.4.

1. Normally 5 % - 8 % trehalose, mannitol and 0.01% Tween80 are added as protectants before lyophilization. Specific concentrations are included in the hardcopy of COA.
2. Please contact us for any concerns or special requirements.

Usage Guide

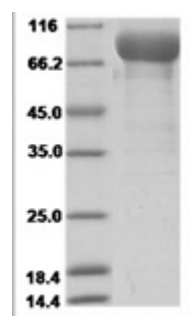
Storage

Store it under sterile conditions at -20°C to -80°C. It is recommended that the protein be aliquoted for optimal storage. Avoid repeated freeze-thaw cycles.

Reconstitution

A hardcopy of COA with reconstitution instruction is sent along with the products. Please refer to it for detailed information.

SDS-PAGE



Human VEGFR2 / Flk-1 / CD309 / KDR Protein (Domain 1&2&3, Fc Tag)