

Anti-CDH6 antibody



Catalog Number: 176408

Product name

Anti-CDH6 antibody

Specificity

Human, Mouse, Rat

Antibody description

Rabbit polyclonal antibody to CDH6

Preparation

This antigen of this antibody was synthesized peptide derived from k-cadherin . at aa range: 180-260

Formulation

Liquid, Liquid in PBS containing 50% glycerol, 0.5% BSA and 0.02% sodium azide.

Storage

Store at +4°C after thawing. Aliquot store at -20°C or -80°C. Avoid repeated freeze / thaw cycles.

Clonality

Polyclonal

Ig Type

Rabbit IgG

Applications

WB, IHC-P

Dilutions

WB: 1:500-1:2000

IHC-P: 1:100-300

Validations

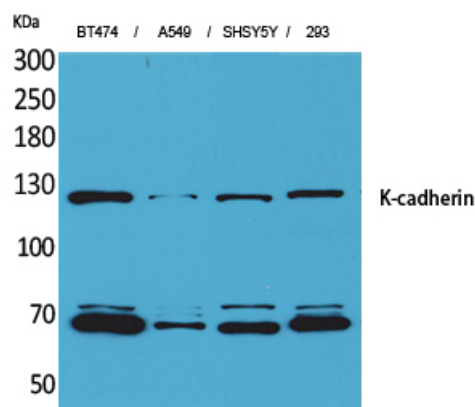


Fig1:; Western Blot analysis of BT474, A549, SHSY5Y, 293 cells using K-cadherin Polyclonal Antibody.. Secondary antibody (catalog#: HA1001) was diluted at 1:20000

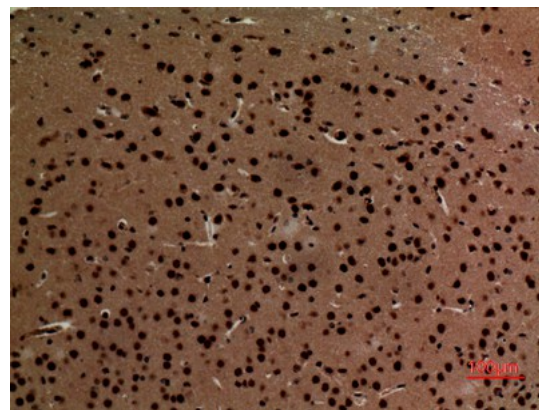


Fig2:; Immunohistochemical analysis of paraffin-embedded mouse-brain, antibody was diluted at 1:100