

# Canine PD1/PDCD1/CD279 (His Tag) recombinant protein



Catalog Number: 504408

## General Information

### Protein Construction

A DNA sequence encoding the canine PDCD1 (XP\_543338.3) (Met1-Leu169) was expressed with a polyhistidine tag at the C-terminus.

### Organism

Canine

### Expression Host

Human Cells

## QC Testing

### Purity

> 85 % as determined by SDS-PAGE.

### Endotoxin

<1.0 EU per  $\mu\text{g}$  protein as determined by the LAL method.

### Stability

Samples are stable for up to twelve months from date of receipt at  $-70^{\circ}\text{C}$

### Predicted N terminal

Leu 25

### Molecular Mass

The recombinant canine PDCD1 consists 156 amino acids and predicts a molecular mass of 17.7

kDa.

### Formulation

Lyophilized from sterile PBS, pH 7.4.

1. 5 % trehalose and mannitol are added as protectants before lyophilization.

2. Please contact us for any concerns or special requirements.

## Usage Guide

### Storage

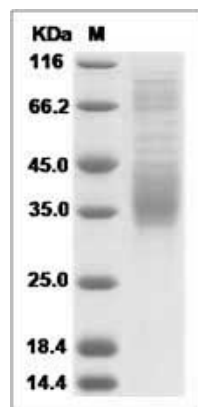
Store it under sterile conditions at  $-20^{\circ}\text{C}$  to  $-80^{\circ}\text{C}$ .

It is recommended that the protein be aliquoted for optimal storage. Avoid repeated freeze-thaw cycles.

### Reconstitution

Adding sterile water, prepare a stock solution of 0.25 mg/ml. Concentration is measured by UV-Vis.

### SDS-PAGE



Canine PD1 / PDCD1 / CD279 Protein (His Tag)  
SDS-PAGE